



George J. Hartman Architects, P.C.

6905 Telegraph Road Suite 101 Bloomfield Hills, MI 48301

248-258-5811 ph. hartmanarchitects@ameritech.net

PROJECT:

Parkland Park Comfort Station

2500 Parkland Street
Dearborn Heights, Michigan 48127

INDEX OF DRAWINGS

SHEET NUMBER	TITLE
A-1	COVER / SITE PLAN / LOCATION MAP / BUILDING DATA / DEMOLITION
A-2	FLOOR PLANS / EXTERIOR ELEVATIONS / BLDG. SECTIONS
A-3	INTERIOR ELEVATIONS / DETAILS / MATERIAL SCHEDULE
A-4	WALL SECTIONS
M-1	UNDERGROUND DRAINAGE PLAN / PIPING & VENTILATION / GENERAL MECHANICAL SPECIFICATIONS
E-1	POWER PLAN / LIGHTING PLAN / ELECTRICAL PLAN / RISER DIAGRAM

BUILDING DATA

PROJECT DESCRIPTION: CONSTRUCTION OF A NEW COMFORT STATION

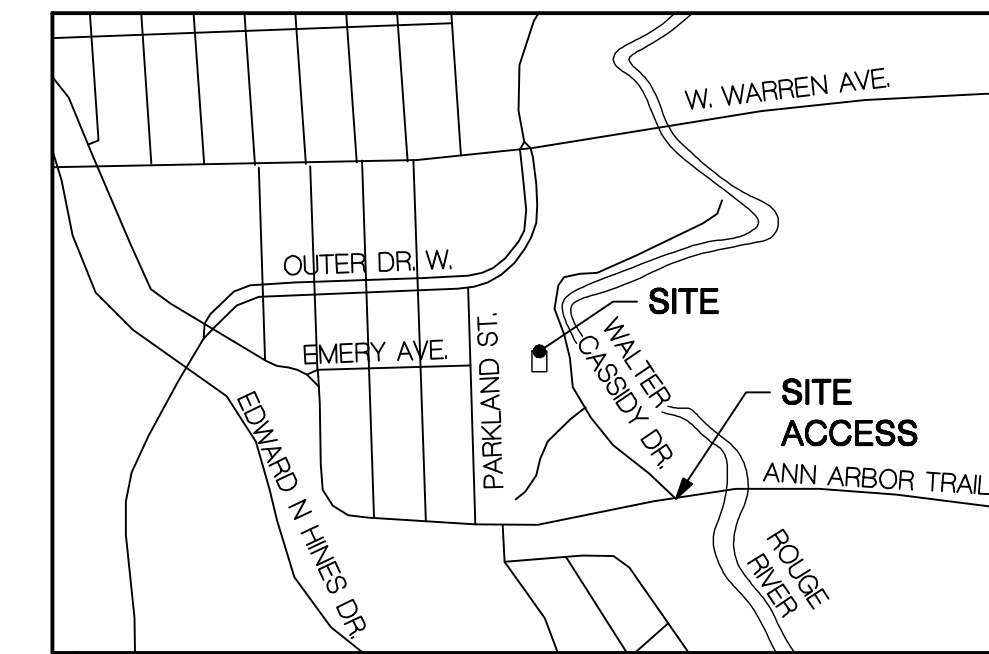
BUILDING SIZE: 700 Square feet

APPLICABLE CODES / CURRENT ADOPTED EDITION:

BUILDING: 2012 MICHIGAN BUILDING CODE
 MECHANICAL: 2012 MICHIGAN MECHANICAL CODE
 ELECTRICAL: 2011 NATIONAL ELECTRIC CODE (STATE OF MICHIGAN ELECTRIC CODE) WITH PART 8 AMENDMENTS
 FIRE: 2012 INTERNATIONAL FIRE CODE (REFERENCED IN 2009 MBC)
 ENERGY: 2012 MICHIGAN BUILDING CODE (CHAPTER 13)
 2012 MICHIGAN UNIFORM ENERGY CODE CHAPTER 5 & PART 10a. RULES (ANSI/ASHRAE 90.1-2007)

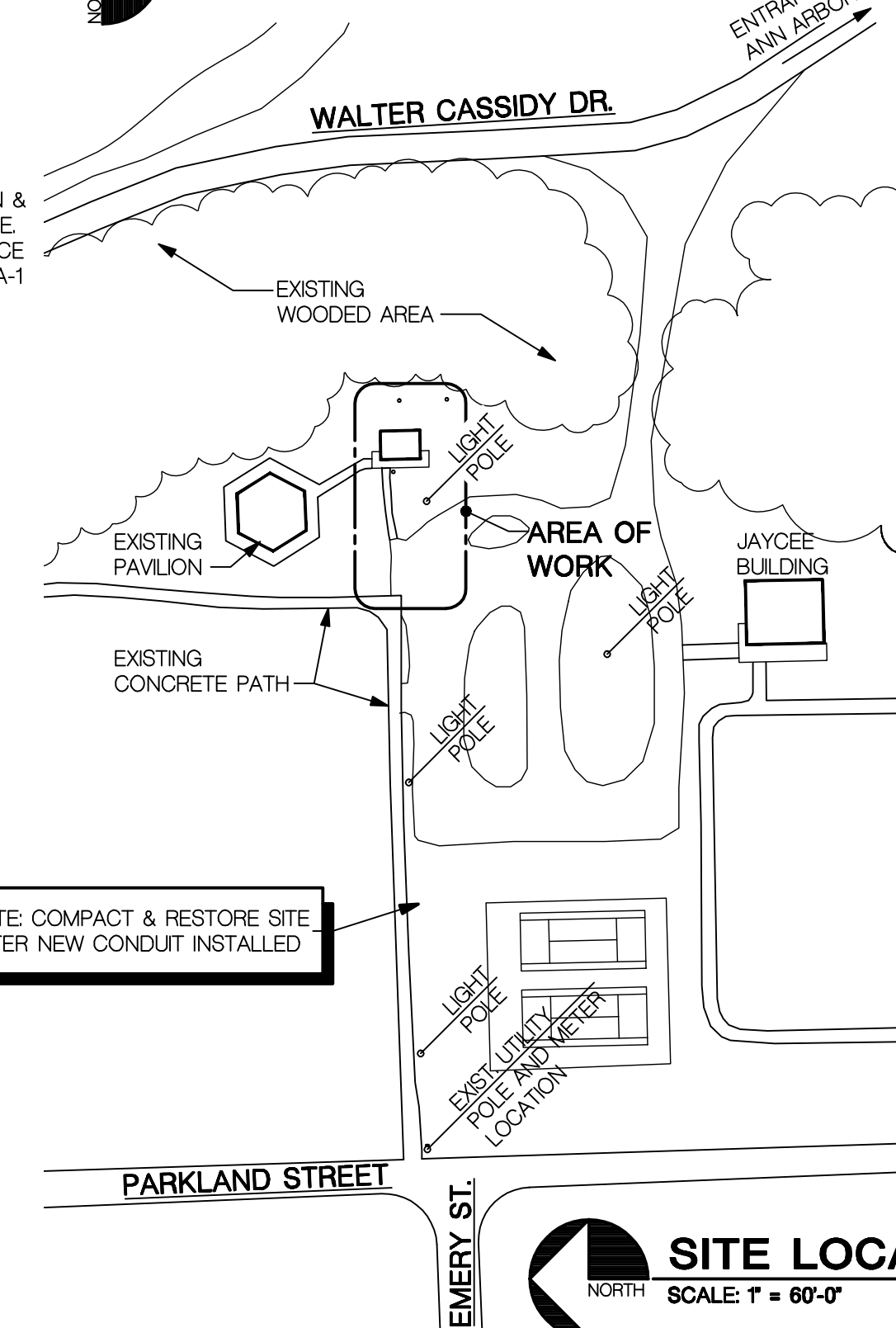
USE GROUP: U - UTILITY AND MISCELLANEOUS

TYPE OF CONST.: TYPE V B - UNPROTECTED, UNSPRINKLERED

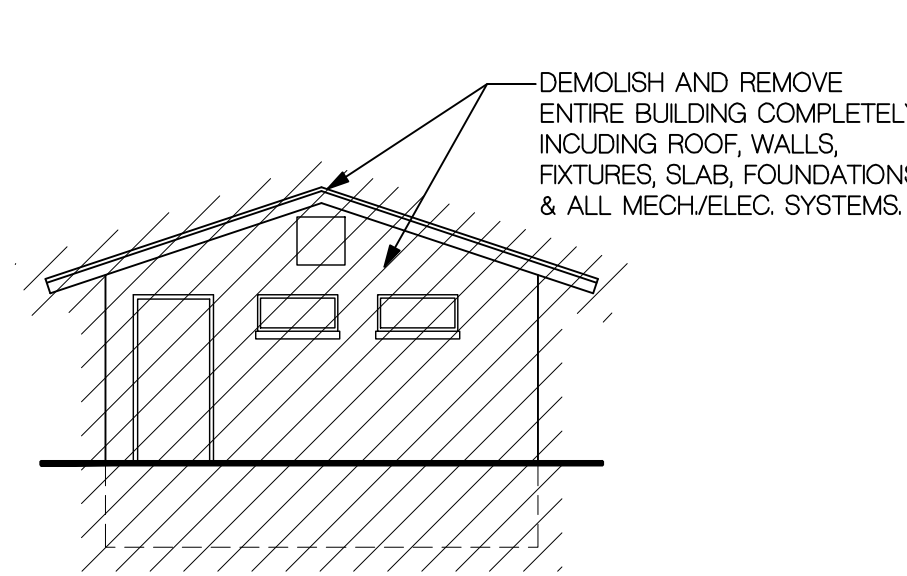


LOCATION MAP

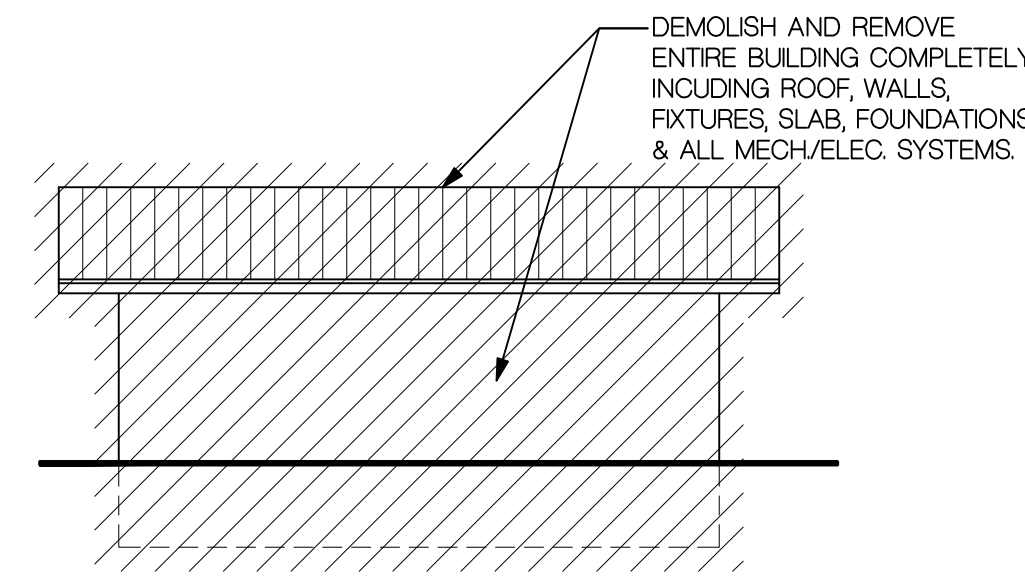
NOT TO SCALE



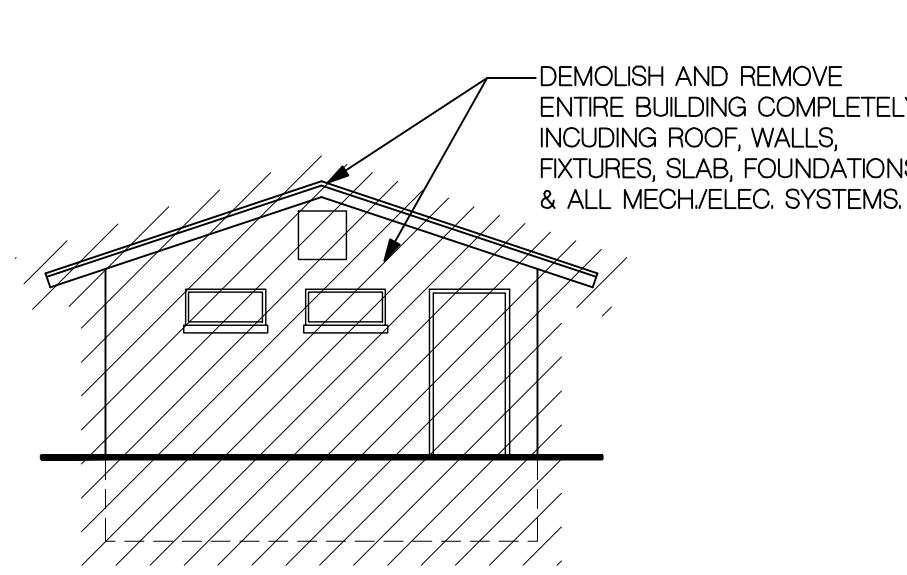
- ### FILL & COMPACTION NOTES:
- BACKFILL OLD FOOTING EXCAVATIONS WITH ENGINEERED SAND FILL. INSTALL IN MAXIMUM 4" LIFTS AND COMPACT TO MINIMUM 98% DENSITY.
 - ALL FILL TO BE INSTALLED UNDER THE DIRECTION OF A QUALIFIED SOILS ENGINEER WHO IS TO BE ON SITE DURING FILL AND COMPACTION WORK.
 - SOILS ENGINEER TO TEST BACKFILLED AREAS AND NEW FOOTING EXCAVATIONS FOR PROPER BEARING CAPACITY OF 3000 PSF.
 - CONTRACTOR TO PAY COST OF SOILS ENGINEER.
 - CONTRACTOR TO PROVIDE SAND BASE FOR NEW BUILDING SLAB AND WALKS. NO EXTRA WILL BE ALLOWED FOR ADDITIONAL SAND.



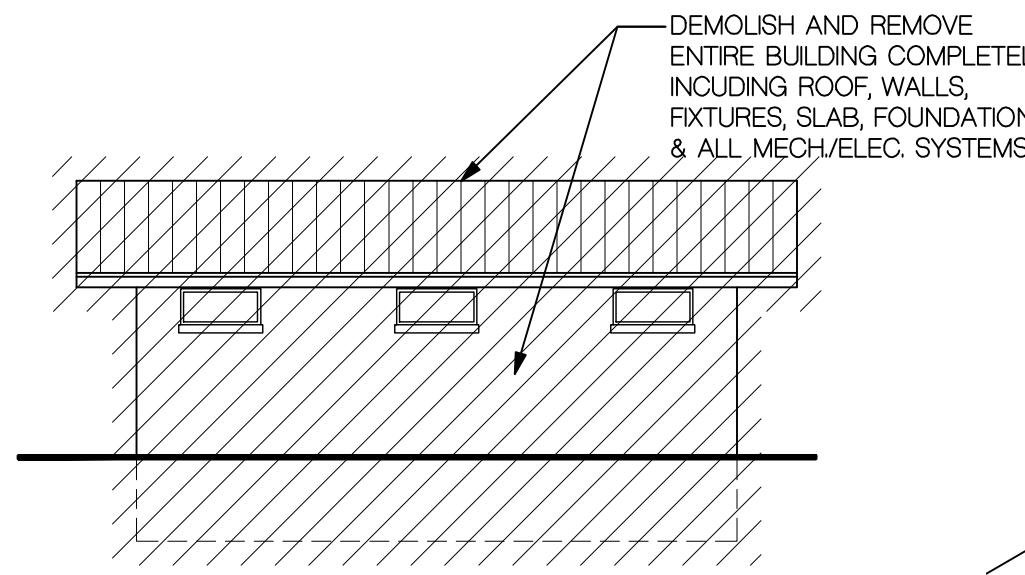
SOUTH ELEVATION DEMOLITION
SCALE: 1/8" = 1'-0"



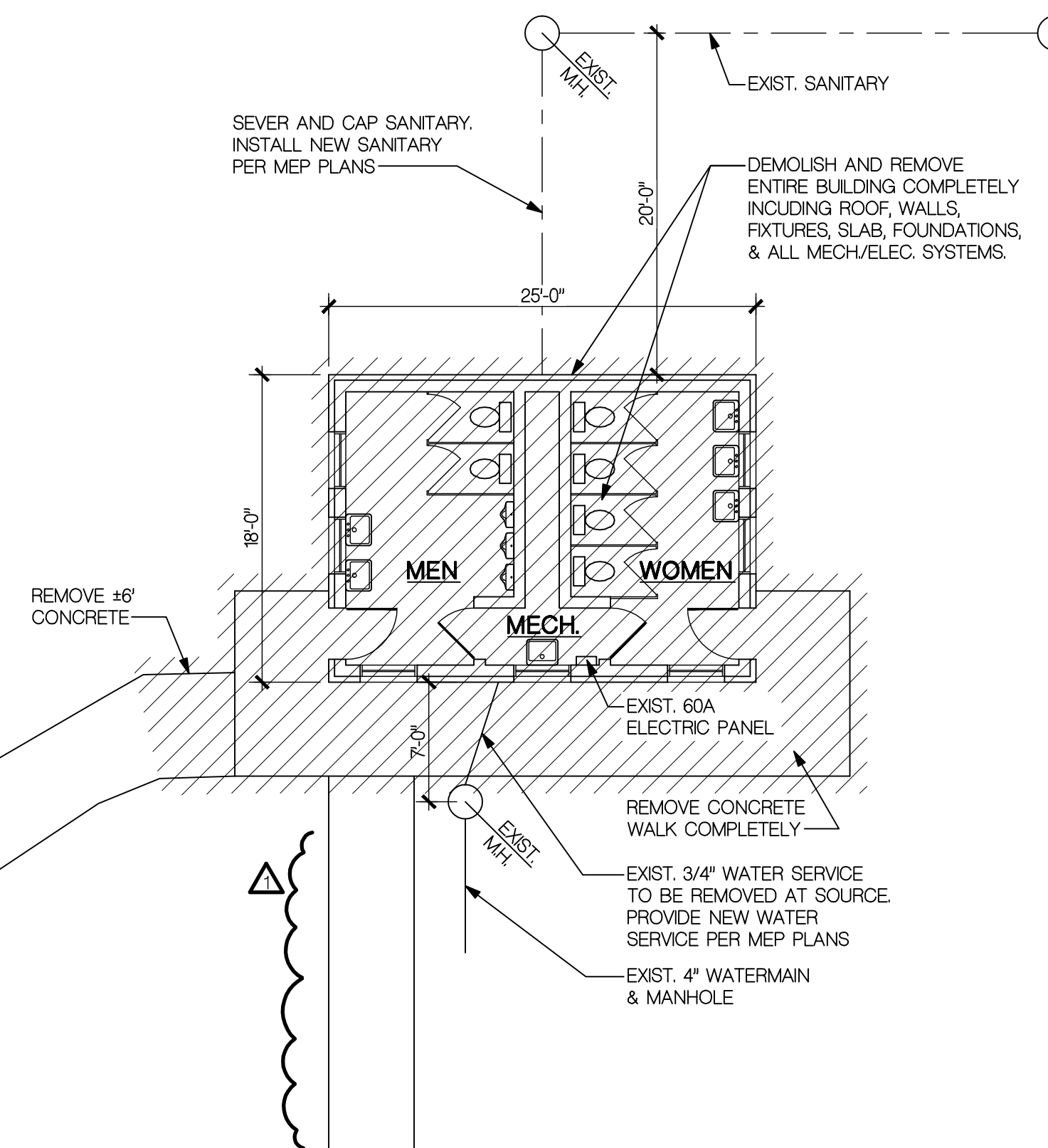
EAST ELEVATION DEMOLITION
SCALE: 1/8" = 1'-0"



NORTH ELEVATION DEMOLITION
SCALE: 1/8" = 1'-0"



WEST ELEVATION DEMOLITION
SCALE: 1/8" = 1'-0"

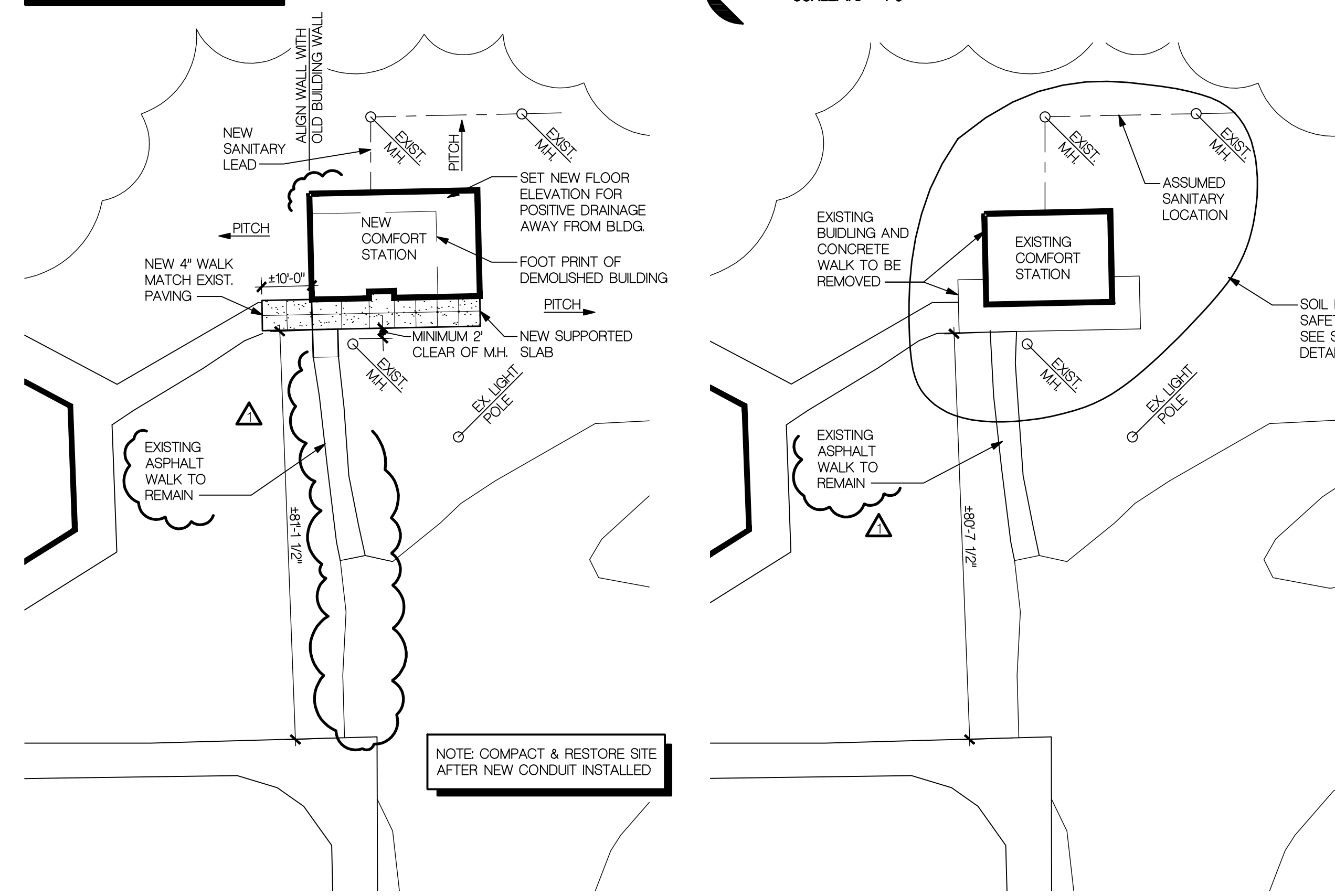


FLOOR PLAN DEMOLITION
SCALE: 1/8" = 1'-0"

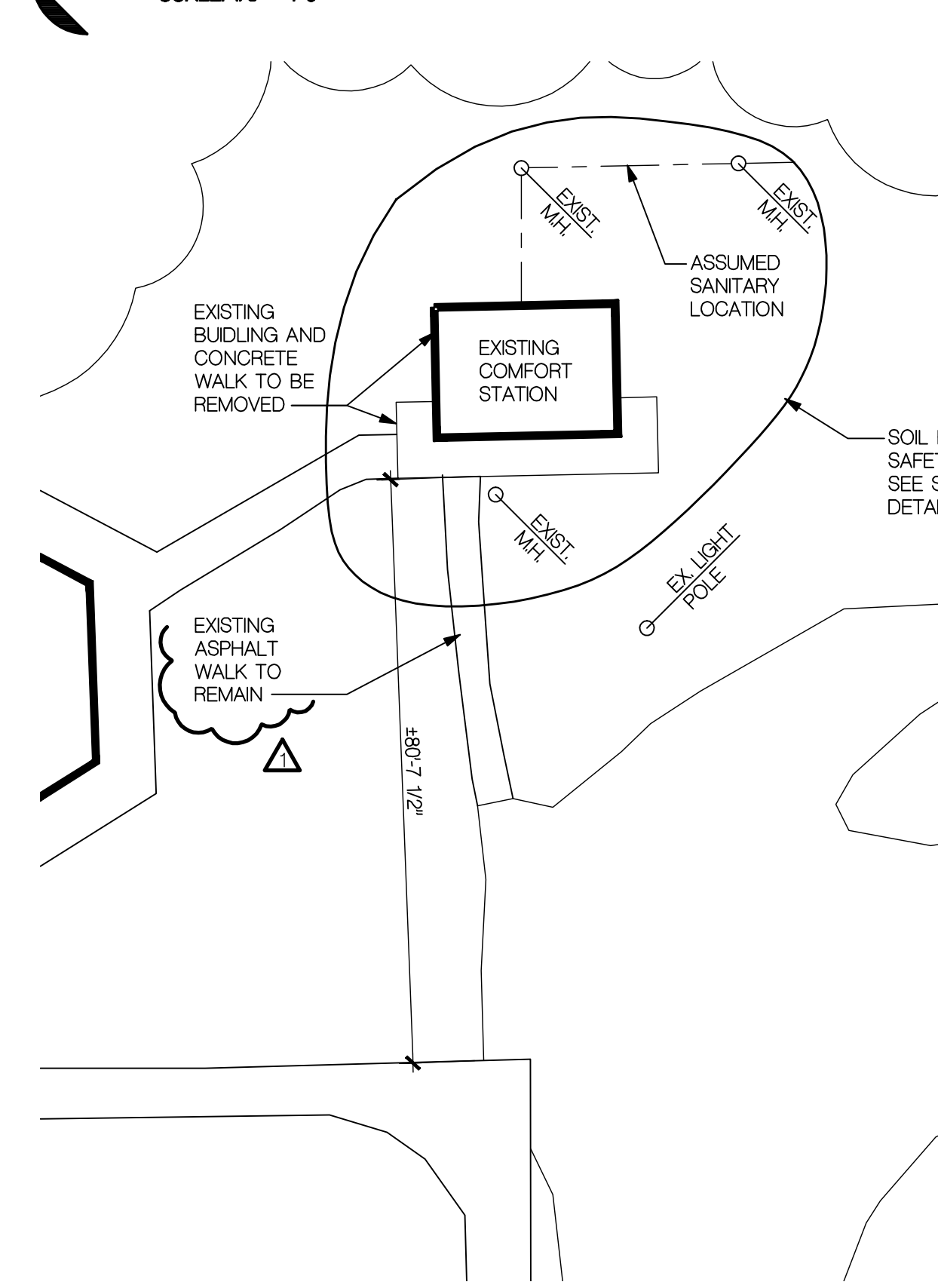
- ### SITE RESTORATION:
- COMPACT SOILS AND SLOPE GRADE AWAY FROM BUILDING.
 - FINISH GRADE AND BLEND INTO NEIGHBORING SOILS.
 - HAUL AWAY SPOILS.
 - SEED AND MULCH.

- ### GENERAL DEMOLITION NOTES:
- CONTACT ALL UTILITY COMPANIES AS NEEDED FOR SERVICE DISCONNECT PRIOR TO DEMOLITION.
 - COMPLETELY DEMOLISH EXISTING RESTROOM BUILDING INCLUDING FOUNDATIONS, AND REMOVE FROM SITE IN A LAWFUL MANNER.
 - CAREFULLY REWORK OR REMOVE ALL UTILITIES AS REQUIRED FOR NEW CONSTRUCTION. COORDINATE SANITARY AND WATER WITH DEARBORN HEIGHTS D.P.S.
 - CONTRACTOR SHALL NOT USE OWNERS DUMPSTERS OR TRASH REMOVAL SYSTEM WITHOUT EXPRESS CONSENT OF THE OWNER. CONTRACTOR IS RESPONSIBLE FOR REMOVAL OF ALL DEMOLITION DEBRIS IN A LAWFUL MANNER.
 - CONTRACTOR SHALL REMOVE DAILY ALL DEBRIS. STOCKPILING OF MATERIALS IS NOT ALLOWED WITHOUT OWNERS PERMISSION. ON SITE DUMPSTERS WILL BE ALLOWED - COORDINATE LOCATION WITH OWNER.
 - DO NOT DAMAGE PARK EQUIPMENT, ELECTRICAL EQUIPMENT, OR SITEWORK SCHEDULED TO REMAIN. CONTRACTOR IS RESPONSIBLE FOR ALL REPAIRS AND REPLACEMENT FOR DAMAGED ITEMS AT NO COST TO THE OWNER.
 - CONTRACTOR TO TAKE ALL NECESSARY MEASURES TO ELIMINATE POTENTIAL FOR INJURY TO WORKERS AND CITIZENS DURING DEMOLITION AND CONSTRUCTION. (POST SIGNAGE, PROVIDE TEMP. FENCING, ETC. ...)

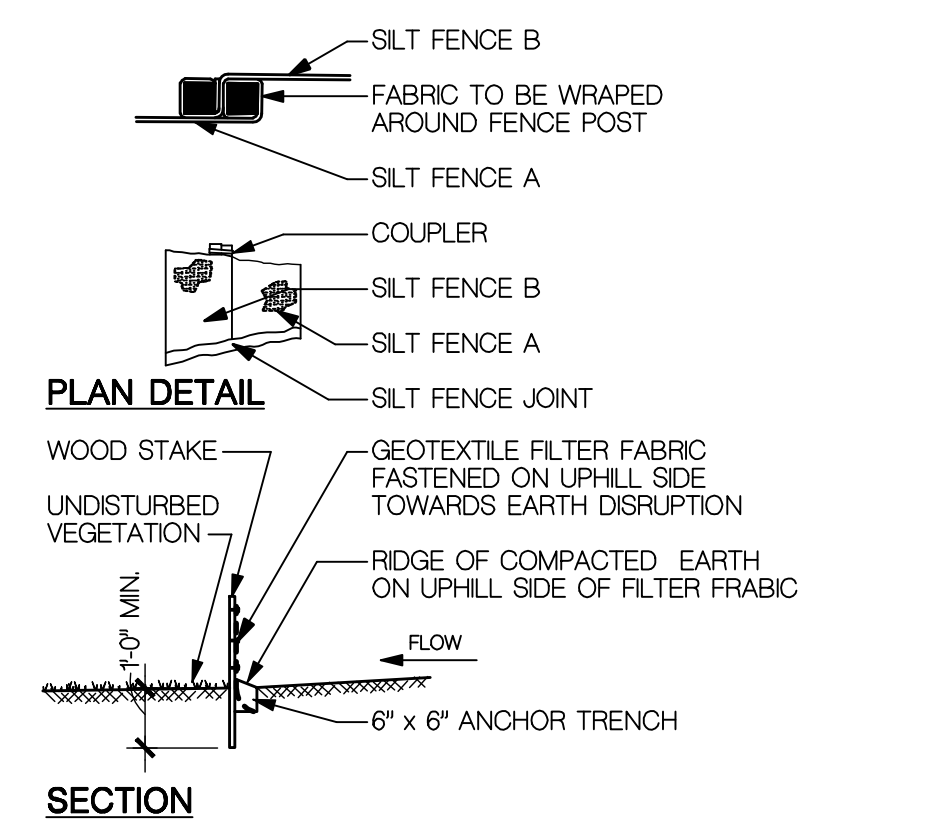
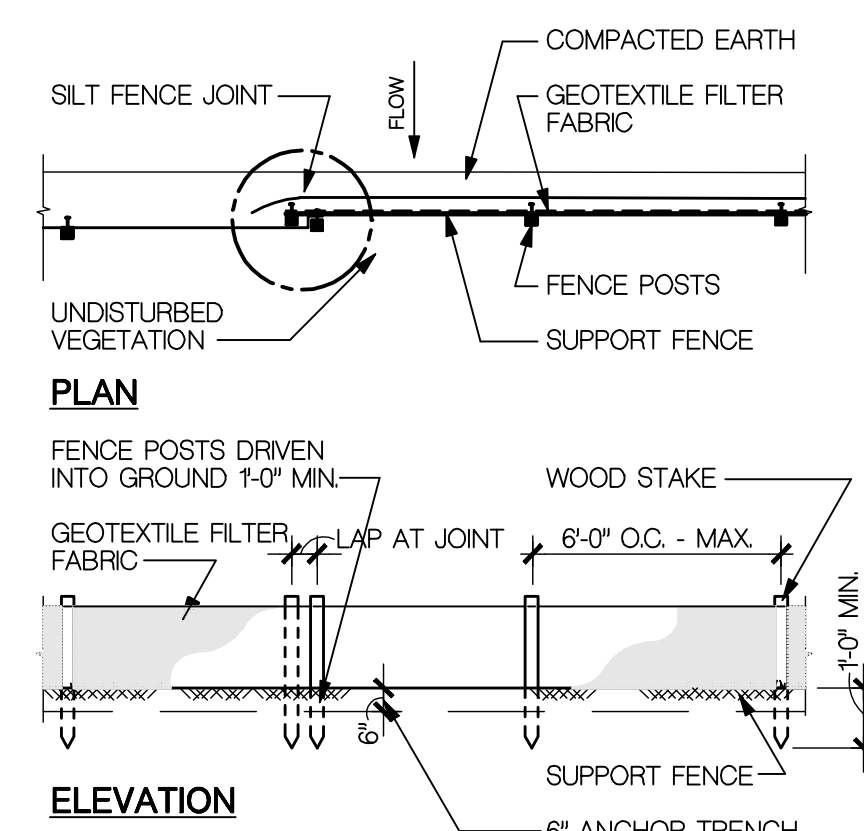
- ### GENERAL SOIL EROSION CONTROL & MAINTENANCE NOTES:
- ALL EROSION AND SEDIMENT CONTROL PROCEDURES SHALL CONFORM TO WAYNE COUNTY'S DESIGN CRITERIA AND IMPLEMENTATION PROCEDURES FOR EROSION AND SEDIMENTATION CONTROL.
 - DAILY INSPECTIONS SHALL BE MADE BY THE CONTRACTOR TO DETERMINE EFFECTIVENESS OF EROSION & SEDIMENTATION CONTROL MEASURES & ANY NECESSARY REPAIRS SHALL BE PERFORMED WITHOUT DELAY.
 - EROSION & SEDIMENTATION FROM WORK ON THIS SITE SHALL BE CONTAINED ON THE SITE AND NOT ALLOWED TO COLLECT ON ANY OFF-SITE AREAS, WETLANDS OR WATERWAYS. WATERWAYS INCLUDE BOTH NATURAL & HANDMADE OPEN DITCHES, STREAMS, STORM DRAINS, LAKES & PONDS.
 - EROSION & SEDIMENT CONTROL MEASURES ARE TO BE PLACED PRIOR TO, OR AS THE FIRST STEP IN CONSTRUCTION. SEDIMENT CONTROL PRACTICES SHALL BE APPLIED AS A PERIMETER DEFENSE AGAINST ANY TRANSPORTATION OF SILT OFF THE SITE.
 - CONTRACTOR SHALL APPLY TEMPORARY EROSION AND SEDIMENTATION CONTROL AS FOLLOWS: SILT FENCE DIVERSION BARRIER WITH STONE OUTLET FILTER AS HEREON SHOWN. TEMPORARY MEASURES SHALL BE REMOVED AS SOON AS PERMANENT STABILIZATION OF SLOPES, DITCHES AND OTHER EARTH CHANGES HAVE BEEN ACCOMPLISHED.
 - ALL DIRT TRACKED ONTO EXISTING PUBLIC ROADS FROM THIS SITE, DUE TO CONSTRUCTION, SHALL BE PROMPTLY REMOVED BY THE CONTRACTOR.



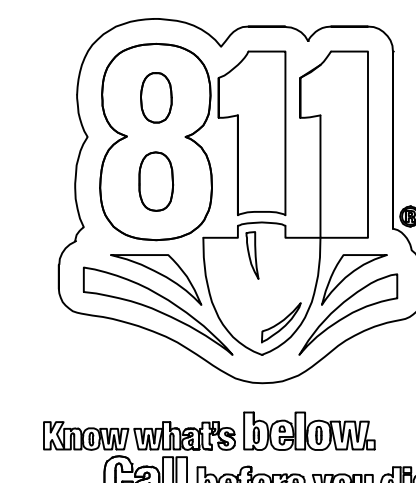
NEW SITE PLAN
SCALE: 1" = 20'-0"



EXISTING SITE PLAN
SCALE: 1" = 20'-0"



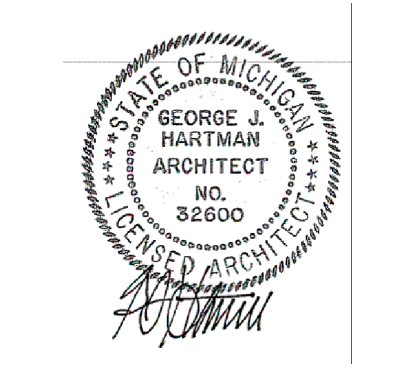
1 SILT FENCE DETAIL
A-1 NOT TO SCALE



Released For: Bidding & Construction March 13, 2017
Value Engineering May 30, 2017

Copyright: 2017
THESE DRAWINGS, DOCUMENTS, DESIGNS, DETAILS AND ATTACHMENTS ARE THE SOLE PROPERTY OF GEORGE J. HARTMAN ARCHITECTS, P.C. AND ARE NOT TO BE REPRODUCED IN PART OR IN WHOLE WITHOUT EXPRESS WRITTEN CONSENT OF GEORGE J. HARTMAN ARCHITECTS, P.C. THESE DRAWINGS ARE PROTECTED BY THE FEDERAL COPYRIGHT ACT.

NOTE TO THE BUILDING OFFICIAL:
THESE DOCUMENTS ARE SUBMITTED ONLY FOR THE PROJECT LISTED ABOVE AND SHOULD NOT BE ACCEPTED WITHOUT THE ORIGINAL SIGNATURE AND SEAL OF THE ARCHITECT.



Scale: AS NOTED
Project Number: 1625
Sheet Number: A-1

1625 - Parkland Park Comfort Station

DOOR SCHEDULE									
MARK	DOOR					FRAME		HARDWARE	
	SIZE	THICKNESS	TYPE	MATERIAL	FINISH	TYPE	MATERIAL	FINISH	SET #1
1	3'-0" x 7'-0"	1 3/4"	A	INSULATED GALVANIZED HM.	P-4 & P-1	A	HM. GALVANIZED	P-4	SET #1

HARDWARE SET:
(PROVIDE YALE, STANLEY, HAGER, MCKINNEY OR EQUAL)

SET #1

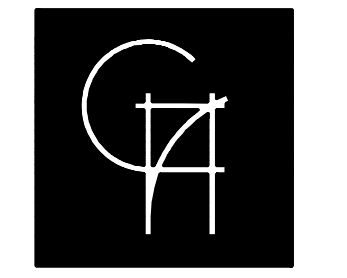
- PUSH PLATE, HAGER 30S
- WIRE PULL PLATE, HAGER 33E
- 8" x 34" STAINLESS STEEL KICKPLATE ON EXTERIOR & INTERIOR HAGER 193S
- KEYED DEADBOLT W/ BLANK INSIDE, MORTISE, YALE 350 SERIES
- INTERIOR MOUNTED CLOSER, YALE 3000 SERIES
- FULL HEIGHT HINGE CONTINUOUS, MCKINNEY, FULL MORTISE, MCK-25HD
- SATIN STAINLESS
- ALL HARDWARE ADA COMPLIANT.
- ALL SCREWS TO BE NON-REMOVABLE TYPE.
- HM. DOOR - EXTRA HEAVY DUTY, 16 GATE, 1 3/4" THICK, 16 GAGE FRAME

DOOR TYPE

FRAME TYPE

ACCESSORIES	
NOTE: 1	MOUNT ALL ACCESSORIES AS REQUIRED TO MEET A.D.A. (AMERICAN WITH DISABILITIES ACT) AND MICHIGAN BARRIER FREE REQUIREMENTS.
ACCESSORIES:	
GB-1	BRADLEY MODEL 812-7 - GRAB BARS - 36" LONG GRAB BAR, 1 1/2" O.D., CONCEALED MOUNTING HEAVY DUTY STAINLESS STEEL (MOUNT AT REAR OF TLT.)
GB-2	BRADLEY MODEL 812-7 - GRAB BARS - 48" LONG GRAB BAR, 1 1/2" O.D., CONCEALED MOUNTING HEAVY DUTY STAINLESS STEEL (MOUNT @ SIDE OF TLT.)
GB-3	BRADLEY MODEL 812-7 - GRAB BARS - 18" LONG GRAB BAR, 1 1/2" O.D., CONCEALED MOUNTING HEAVY DUTY STAINLESS STEEL (MOUNT VERT. @ SIDE OF TLT. W/48" BAR)
NOTE:	INSURE SECURE MOUNTING - REFER TO 4/A-3 GRAB BARS SHALL WITHSTAND A MINIMUM LOAD OF 250 LBS, PEENED FINISH
HD-1	AMERICAN DRYER - EXTREME AIR MODEL GX79-SS
M-1	BRADLEY MODEL 748 - 24"W. x 36" H. STAINLESS STEEL MIRROR
SD-1	BRADLEY MODEL 6324 - SOAP DISPENSER - LAVATORY MOUNTED
TD-1	BRADLEY MODEL 5234 - TOILET TISSUE DISPENSER, NON-CONTROLLED DELIVERY
FIXTURES:	
SEE MECHANICAL	

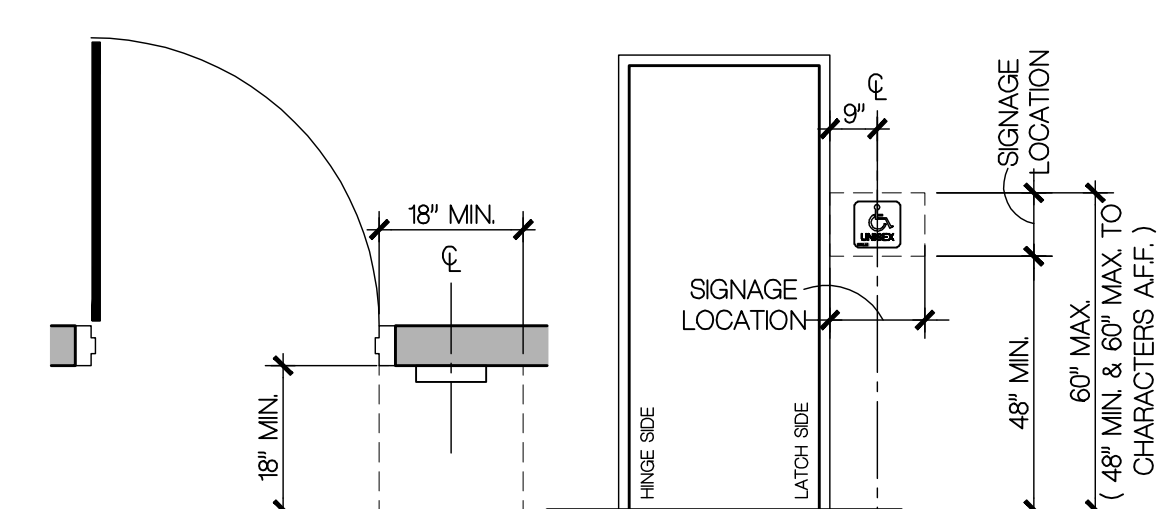
MATERIALS				
MARK	MATERIAL	MANUFACTURER	COLOR	NOTE
B-1	SPLIT FACE BLOCK	GRAND BLANC CEMENT PRODUCTS	PETOSKY OR OWNER APPROVED	SPLIT FACE ON EXTERIOR FACE OF BLOCK. SMOOTH ON INTERIOR FACE OF BLOCK.
B-2	SCORED BLOCK	GRAND BLANC CEMENT PRODUCTS	DESERT RED OR OWNER APPROVED	SCORED FACE ON EXTERIOR FACE OF BLOCK. SMOOTH ON INTERIOR FACE.
EP-1	EPOXY	EPOXY-COAT	BEIGE WITH BEIGE BLEND	NON-SKID ALUMINUM OXIDE
P-1	ANTI-GRAFFITI COATING	SHERWIN WILLIAMS	CLEAR	2 COATS ON BLOCK & DOORS RESTROOM INTERIORS, BUILDING EXTERIOR
P-2	CEILING PAINT	SHERWIN WILLIAMS	PURE WHITE SW7005	1 COAT PRIME, 2 COATS FINISH, SEMI GLOSS
P-3	TRIM PAINT	SHERWIN WILLIAMS	MATCH ROOF COLOR	1 COAT PRIME, 2 COATS FINISH, SEMI GLOSS
P-4	INTERIOR WALL & DOOR PAINT	SHERWIN WILLIAMS	KILM BEIGE SW 6106	OIL BASE 1 COAT PRIMER, 2 COATS FINISH, SEMI GLOSS
R-1	ASPHALT SHINGLES	CERTANTEED LANDMARK PRO	MAX DEF DRIFTWOOD	
RD-1	ROLLING DOOR	OVER-HEAD DOOR	RAL 8028 POWDERGAURD PREMIUM POWDER COAT	MODEL #620, 6'-0"W. x 7'-4"H. INTERIOR TRACK
TP-1	TOILET PARTITIONS	ACCURATE	HAZELNUT #4450C	COLOR-THRU PHENOLIC



George J. Hartman Architects, P.C.

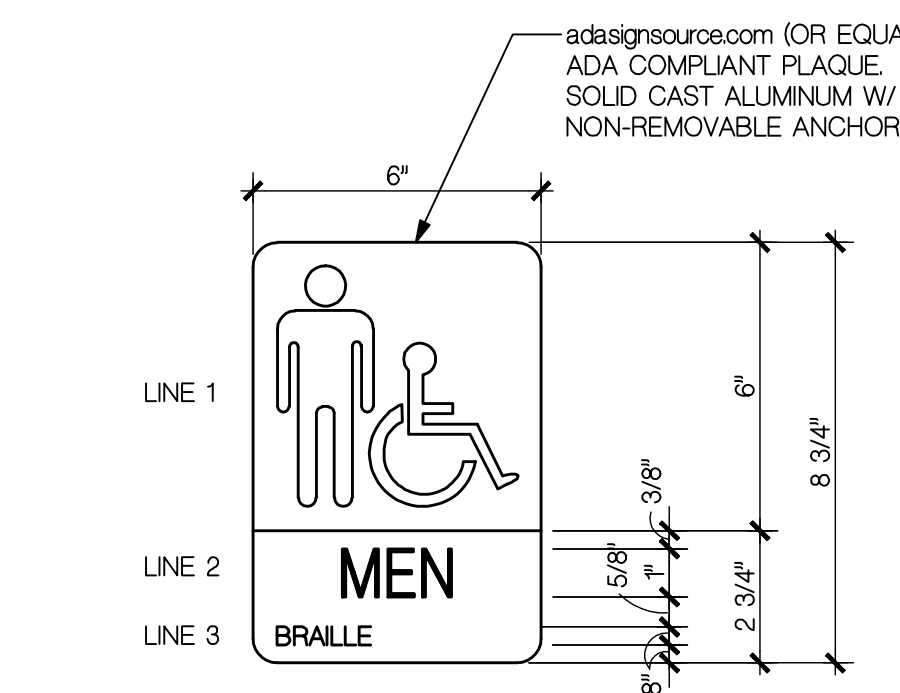
6905 Telegraph Road Suite 101 Bloomfield Hills, MI 48301

248-258-5811 ph. hartmanarchitects@earthlink.net

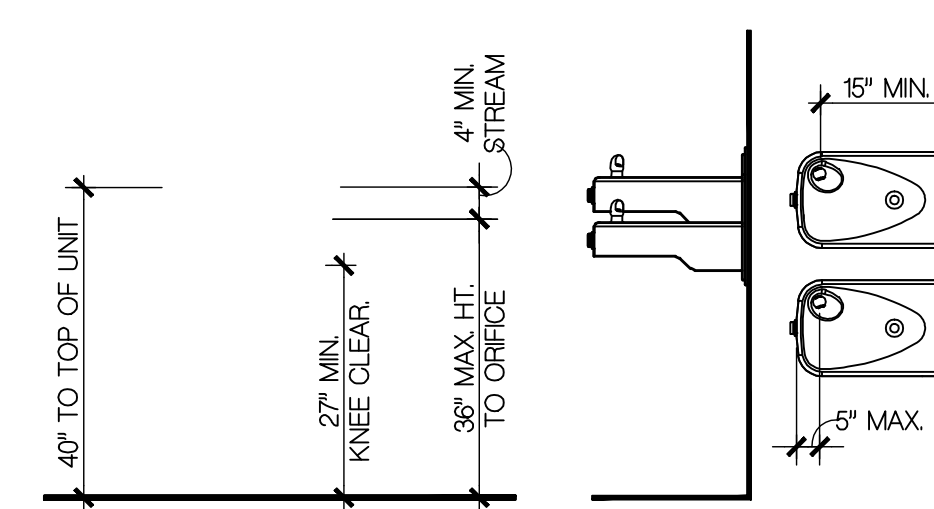


NOTES:
1. MAINTAIN MIN. 18" x 18" CLEAR FLOOR AREA @ SIGNAGE
2. MOUNT ON LATCH SIDE OF DOOR WHERE THERE IS NO SPACE AVAILABLE @ LATCH SIDE OF DOOR MOUNT ON NEAREST ADJACENT WALL

9 ADA SIGNAGE MOUNTING HEIGHT
A-3 NOT TO SCALE

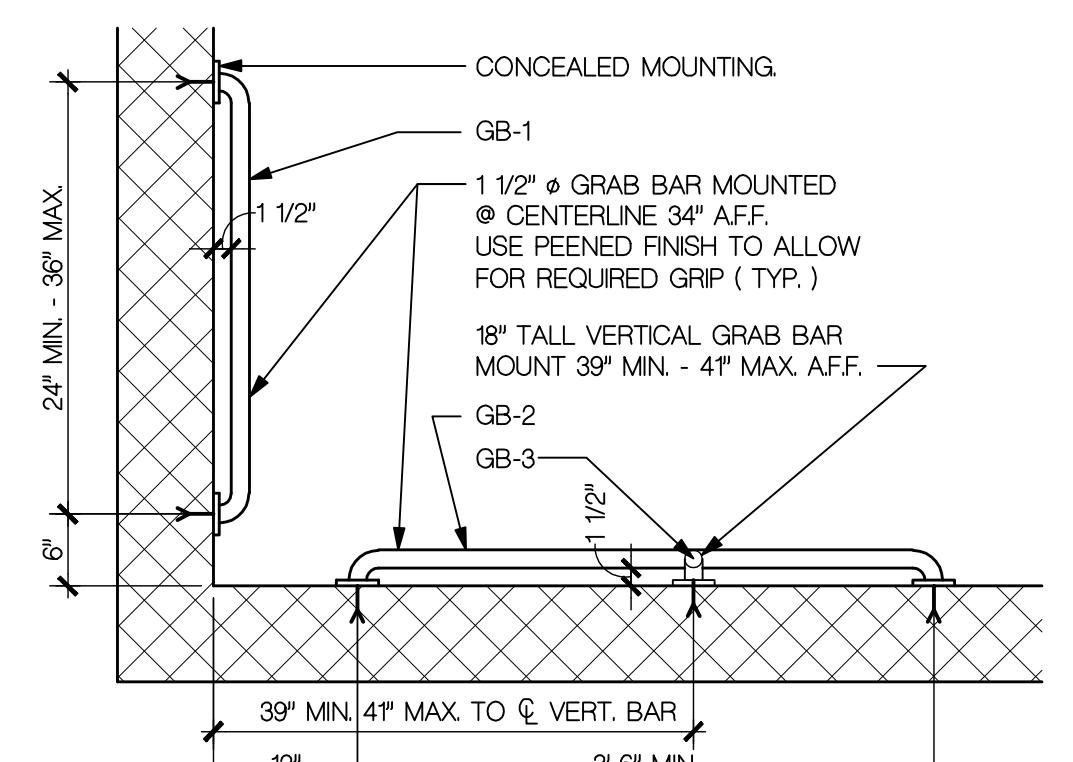


8 SIGNAGE DETAIL
A-3 SCALE: 3" = 1'-0"

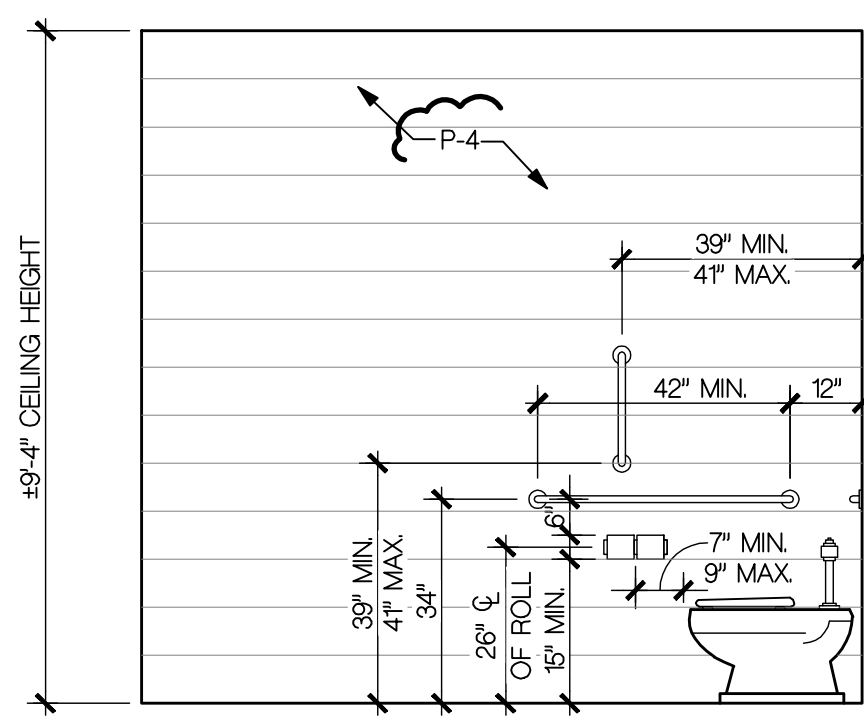


NOTES:
1. PROVIDE MIN. 30" x 48" CLEAR IN FRONT OF EACH FOUNTAIN
2. PUSH BAR TO REQUIRE 5 LBS. OR LESS PRESSURE TO ACTIVATE
3. FOUNTAIN DIMENSIONS MAY VARY PER MANUFACTURER
4. MOUNTING HEIGHTS & DIMENSIONS ARE TO BE PER LOCAL CODE, MICHIGAN BUILDING CODE, AND A.D.A.

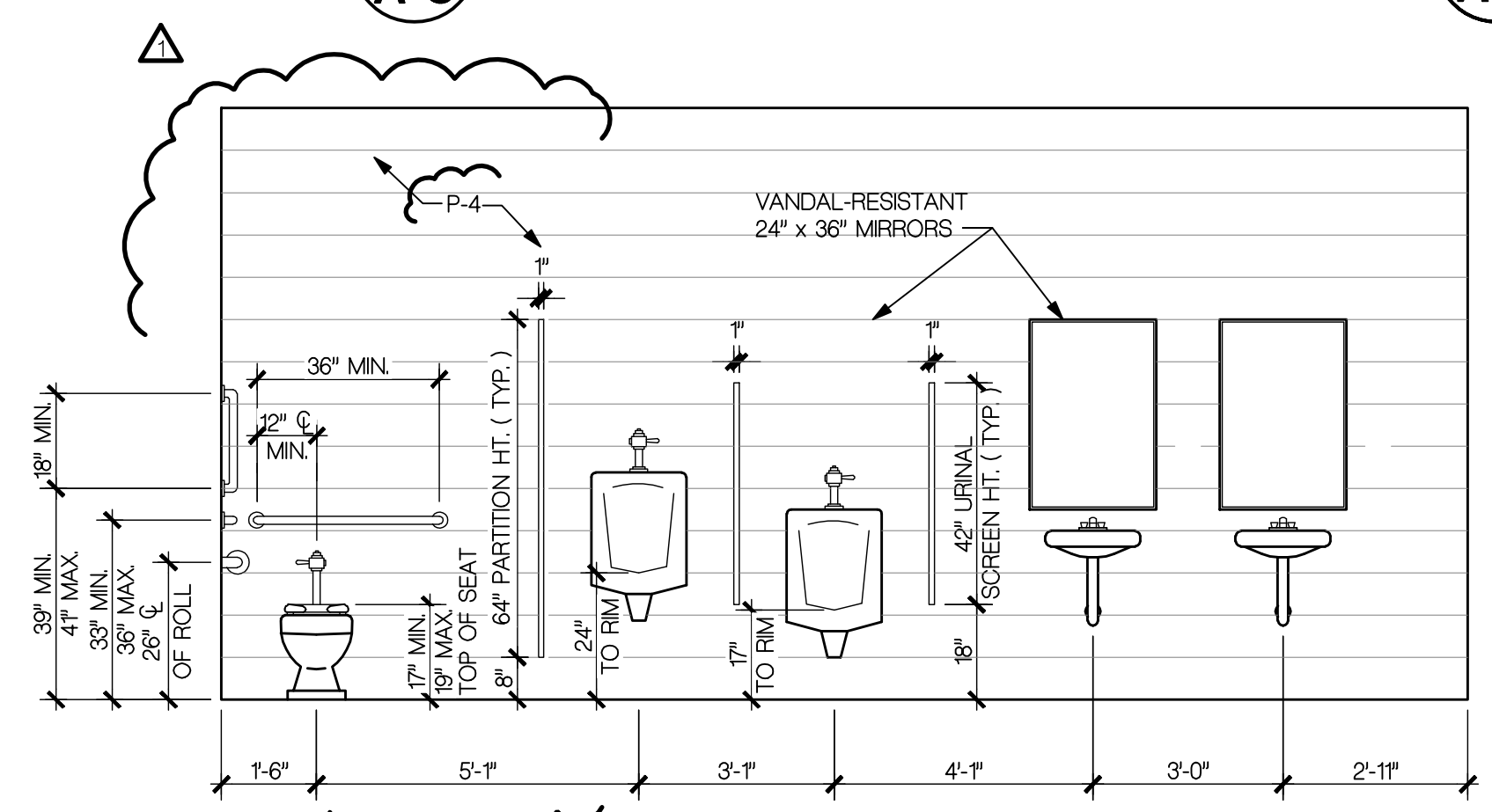
7 DRINKING FOUNTAIN
A-3 SCALE: 1/2" = 1'-0"



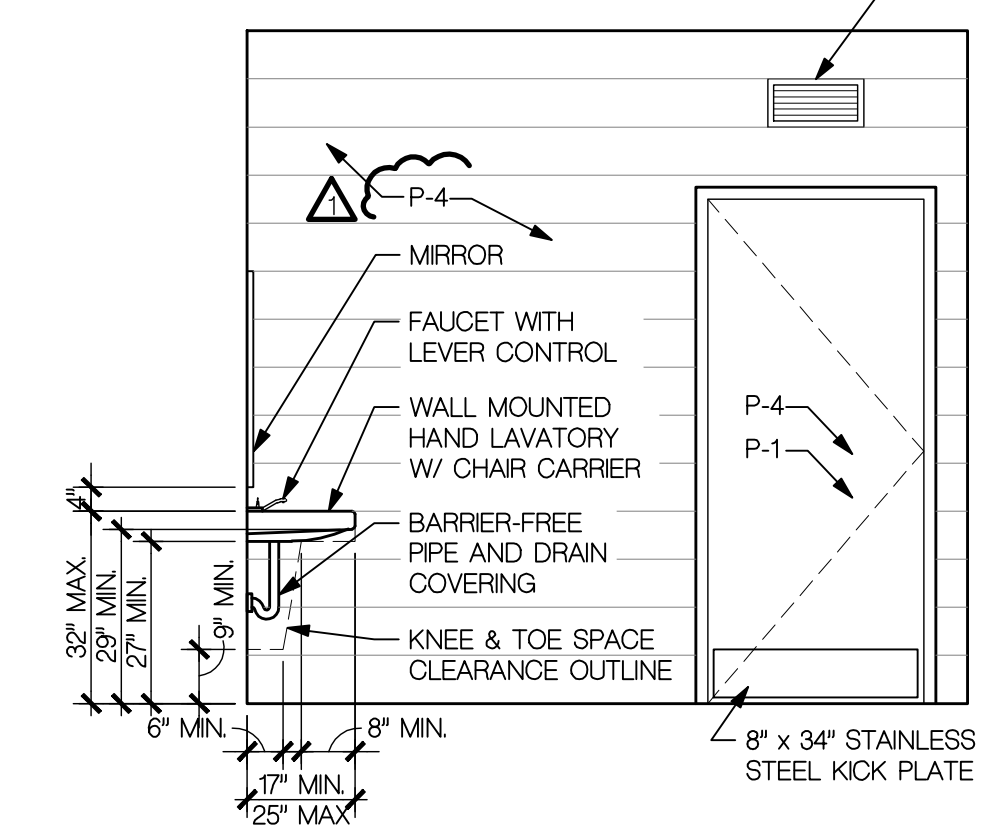
6 GRAB BAR DETAIL
A-3 SCALE: 3/4" = 1'-0"



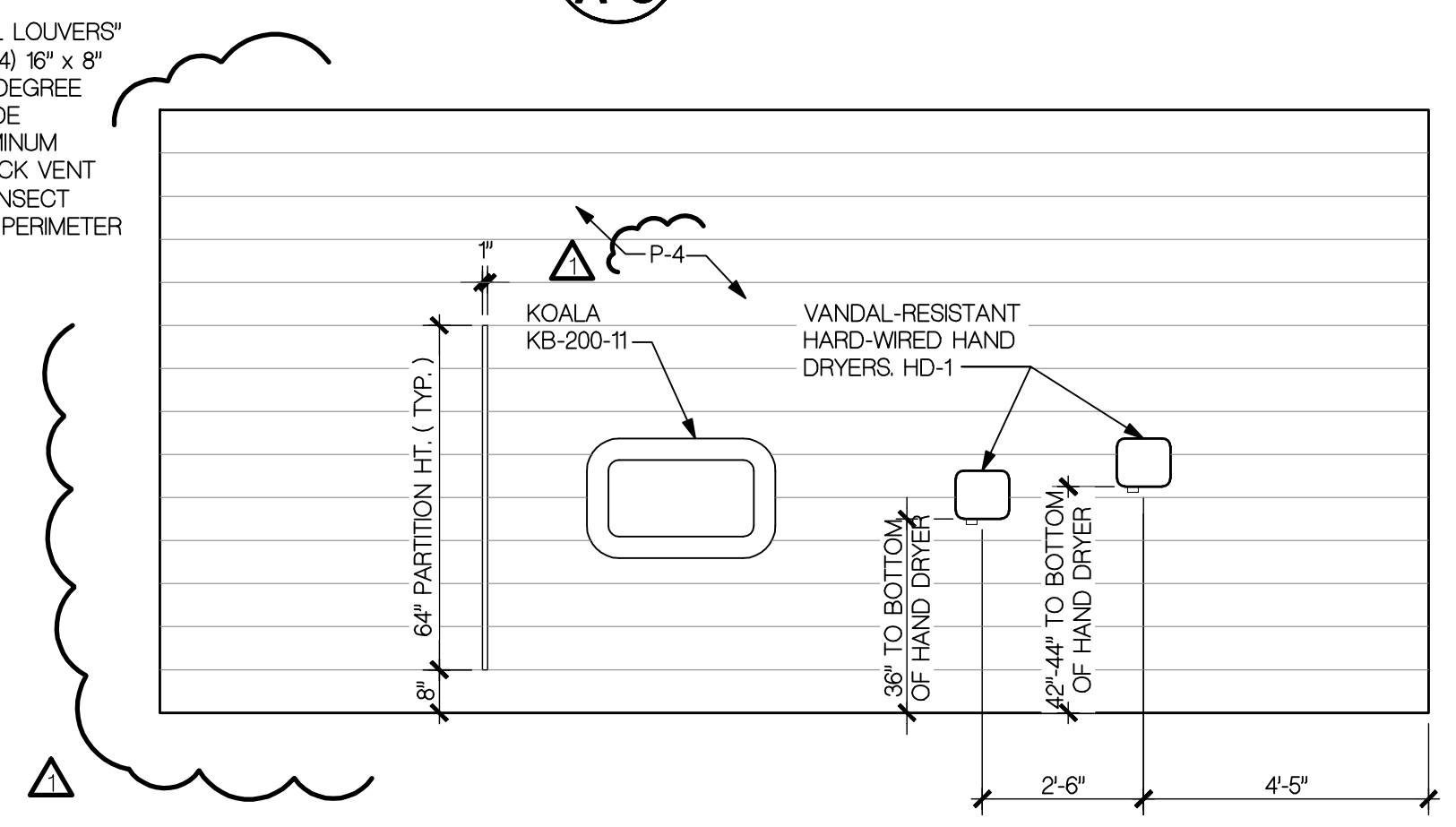
H ELEVATION - MEN
A-3 SCALE: 3/8" = 1'-0"



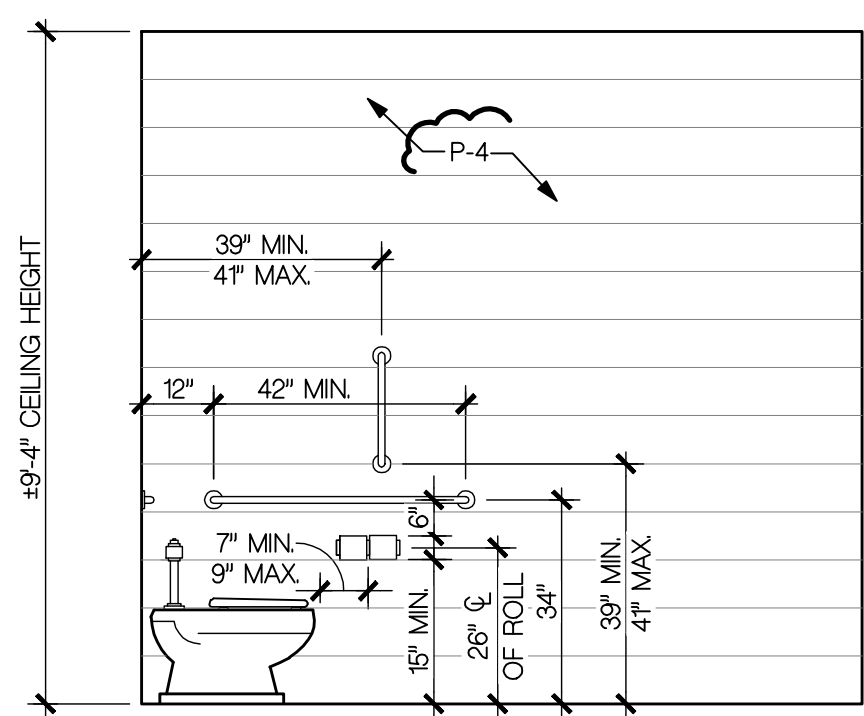
G ELEVATION - MEN
A-3 SCALE: 3/8" = 1'-0"



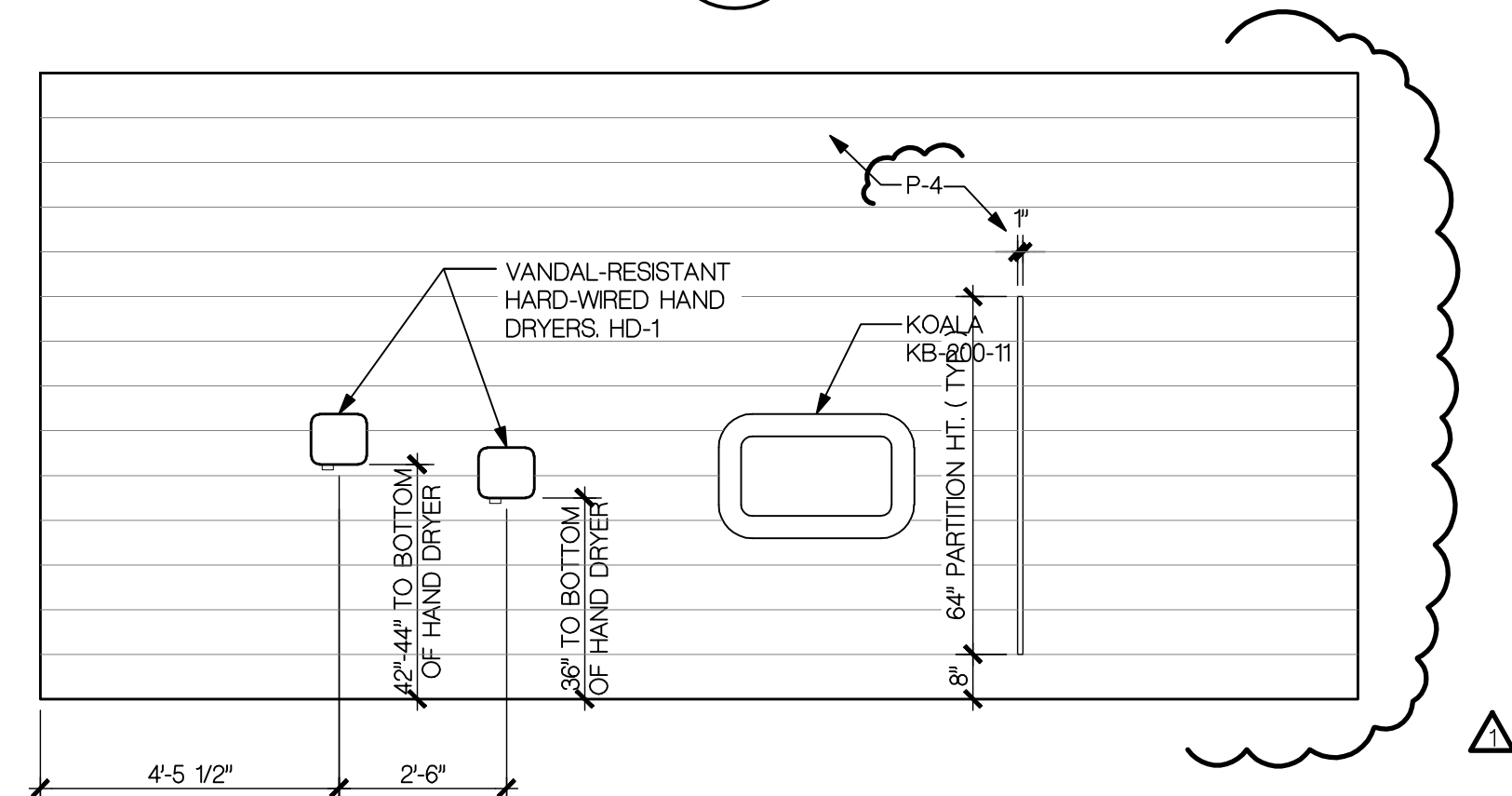
F ELEVATION - MEN
A-3 SCALE: 3/8" = 1'-0"



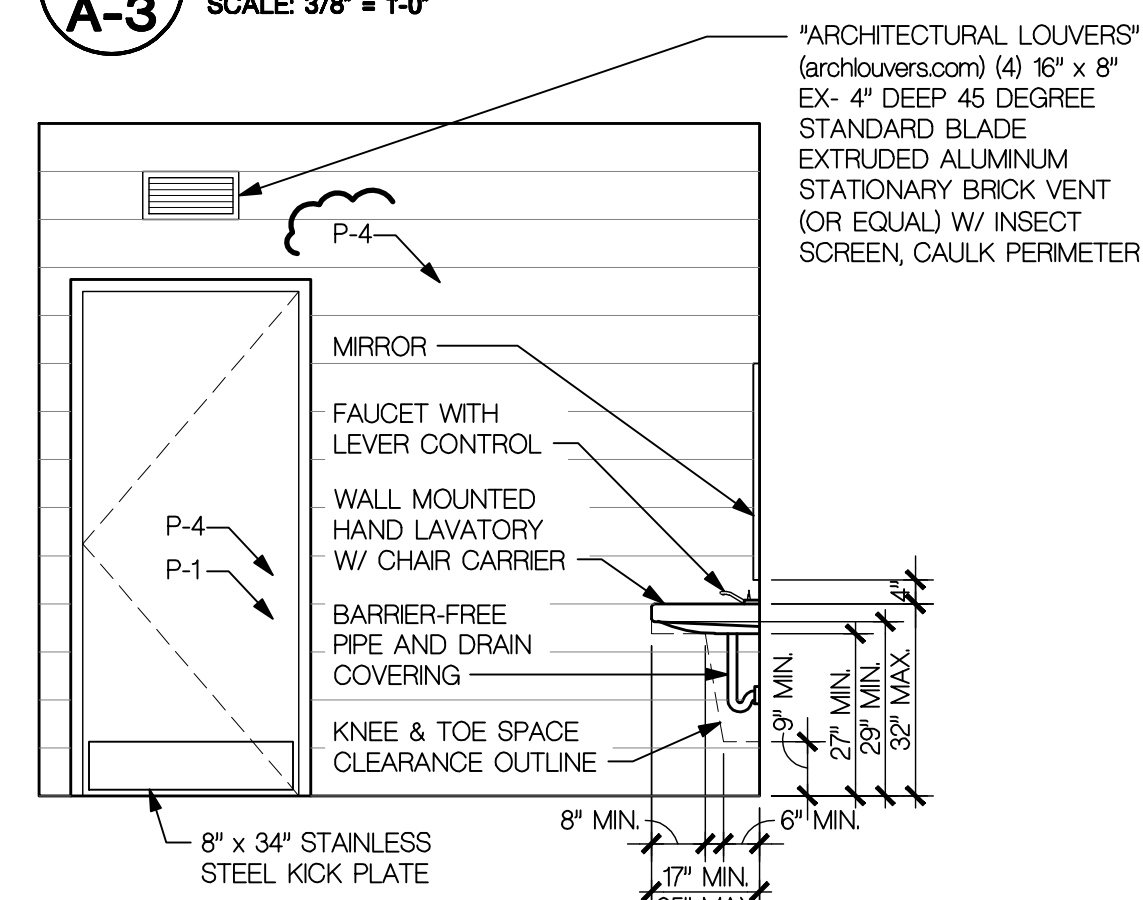
E ELEVATION - MEN
A-3 SCALE: 3/8" = 1'-0"



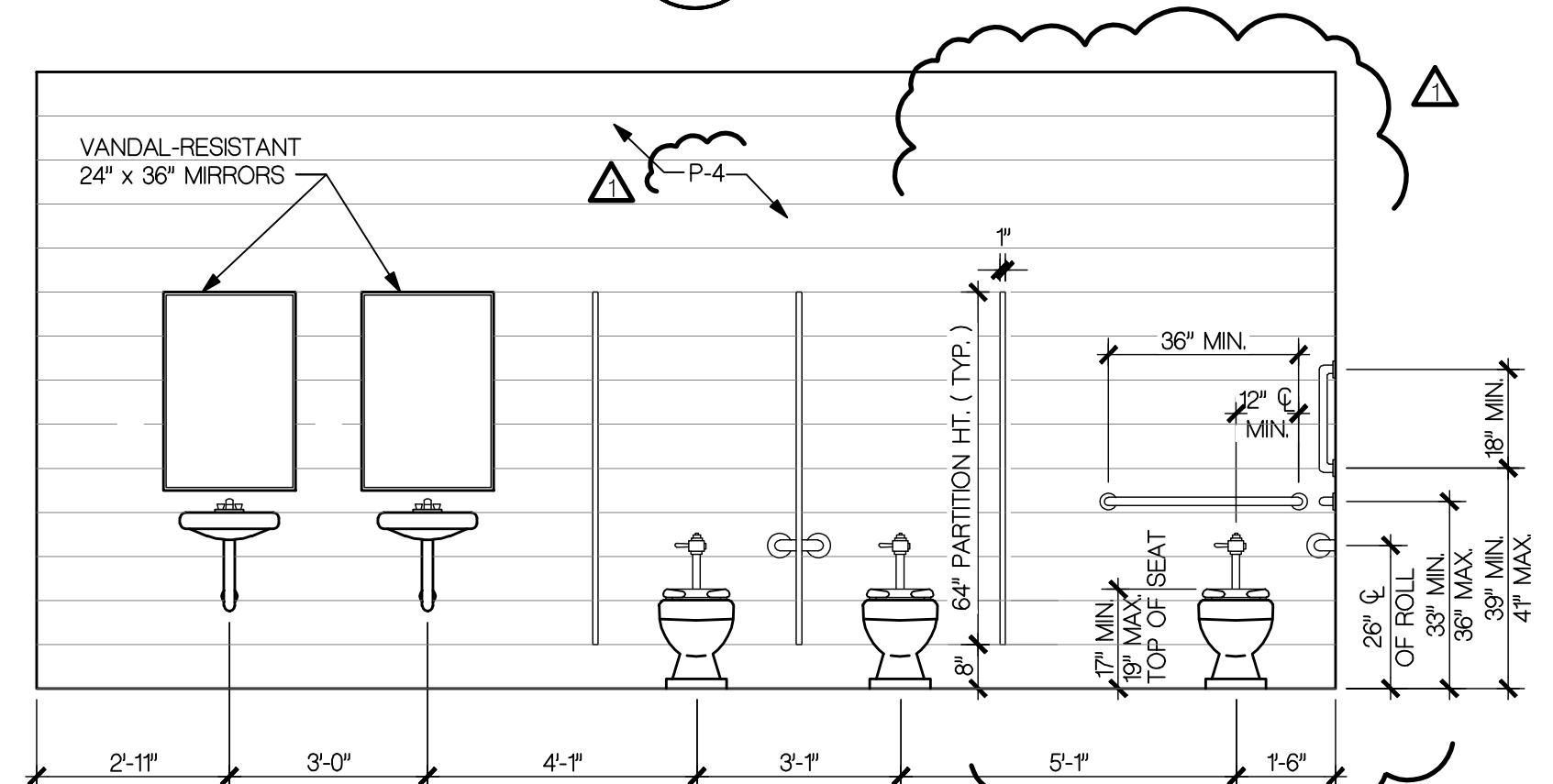
D ELEVATION - WOMEN
A-3 SCALE: 3/8" = 1'-0"



C ELEVATION - WOMEN
A-3 SCALE: 3/8" = 1'-0"



B ELEVATION - WOMEN
A-3 SCALE: 3/8" = 1'-0"



A ELEVATION - WOMEN
A-3 SCALE: 3/8" = 1'-0"

Project

Parkland Park Comfort Station

2500 Parkland St. Dearborn Heights, Michigan 48127

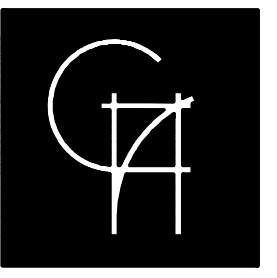
Released For: Bidding & Construction March 13, 2017
Value Engineering May 30, 2017

Copyright 2017
THESE DRAWINGS, DOCUMENTS, DESIGNS, DETAILS AND ATTACHMENTS ARE THE SOLE PROPERTY OF GEORGE J. HARTMAN ARCHITECTS, P.C. AND ARE NOT TO BE REPRODUCED IN PART OR IN WHOLE WITHOUT EXPRESS WRITTEN CONSENT OF GEORGE J. HARTMAN ARCHITECTS, P.C. THESE DRAWINGS ARE PROTECTED BY THE FEDERAL COPYRIGHT ACT.

NOTE TO THE BUILDING OFFICIAL
THESE DOCUMENTS ARE SUBMITTED ONLY FOR THE PROJECT LISTED ABOVE AND SHOULD NOT BE ACCEPTED WITHOUT THE ORIGINAL SIGNATURE AND SEAL OF THE ARCHITECT.



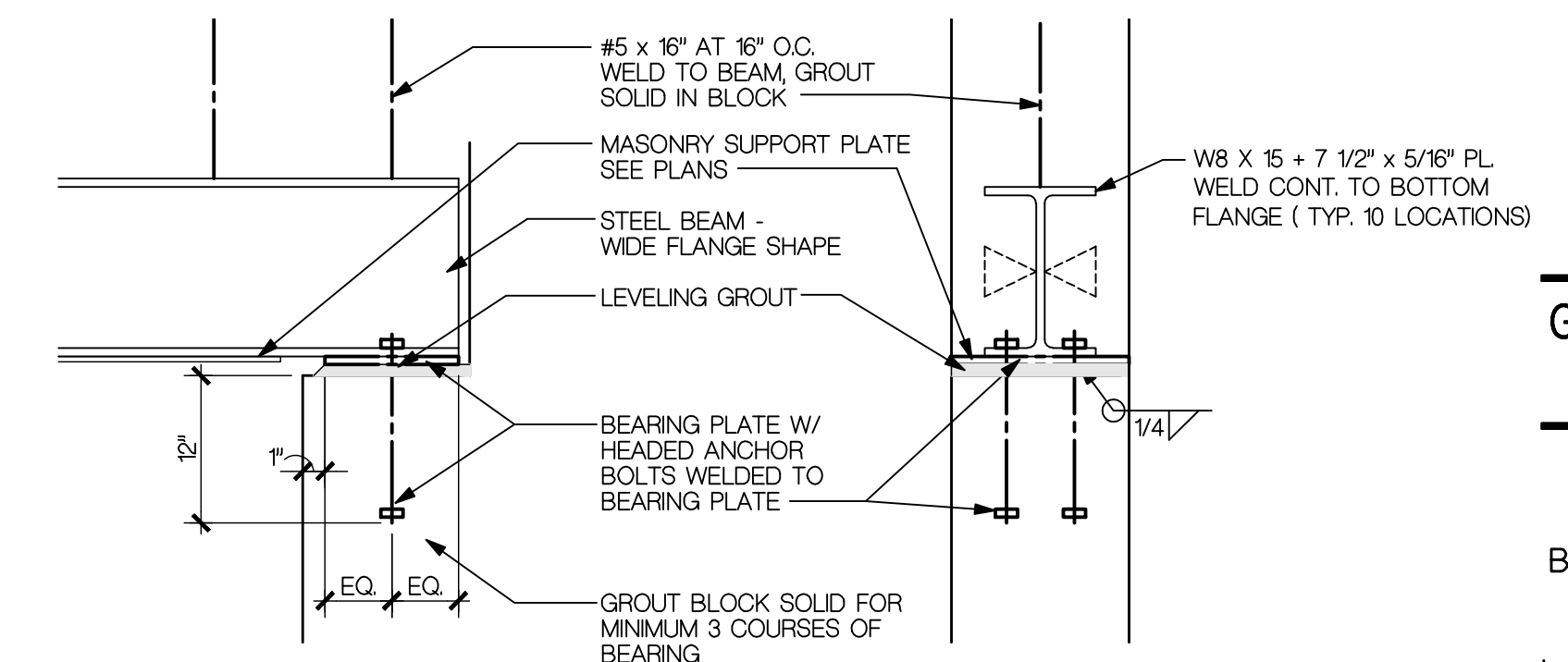
Scale AS NOTED
Project Number 1625
Sheet Number A-3
1625 - Parkland Park Comfort Station



George J. Hartman
Architects, P.C.

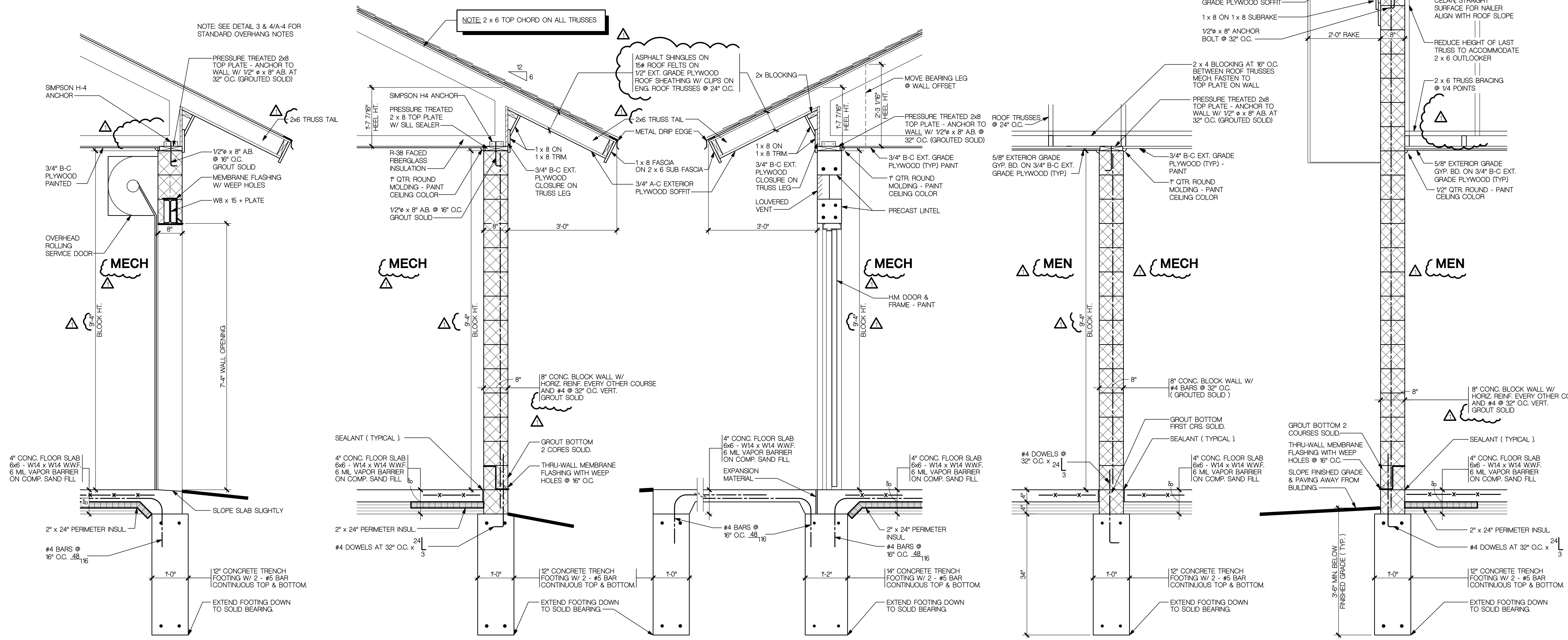
6905 Telegraph Road
Suite 101
Bloomfield Hills, MI 48301

248-258-5811 ph.
hartmanarchitects@ameritech.net



6 TYP. BEAM BEARING ON MASONRY
SCALE: 3/4" = 1'-0"

WOOD SPECIFICATION
1 x TRIM - CLEAR CEDAR, SURFACE SMOOTH 4 SIDES
2 x FRAMING - #2 OF BETTER SPF



Project
Parkland Park Comfort Station
2500 Parkland St.
Dearborn Heights, Michigan 48127

Released For:
Bidding & Construction March 13, 2017
Value Engineering May 30, 2017

© Copyright: 2017
THESE DRAWINGS, DOCUMENTS, DESIGNS, DETAILS AND ATTACHMENTS ARE THE SOLE PROPERTY OF GEORGE J. HARTMAN ARCHITECTS, P.C. AND ARE NOT TO BE REPRODUCED IN PART OR IN WHOLE WITHOUT EXPRESS WRITTEN CONSENT OF GEORGE J. HARTMAN ARCHITECTS, P.C. THESE DRAWINGS ARE PROTECTED BY THE FEDERAL COPYRIGHT ACT.

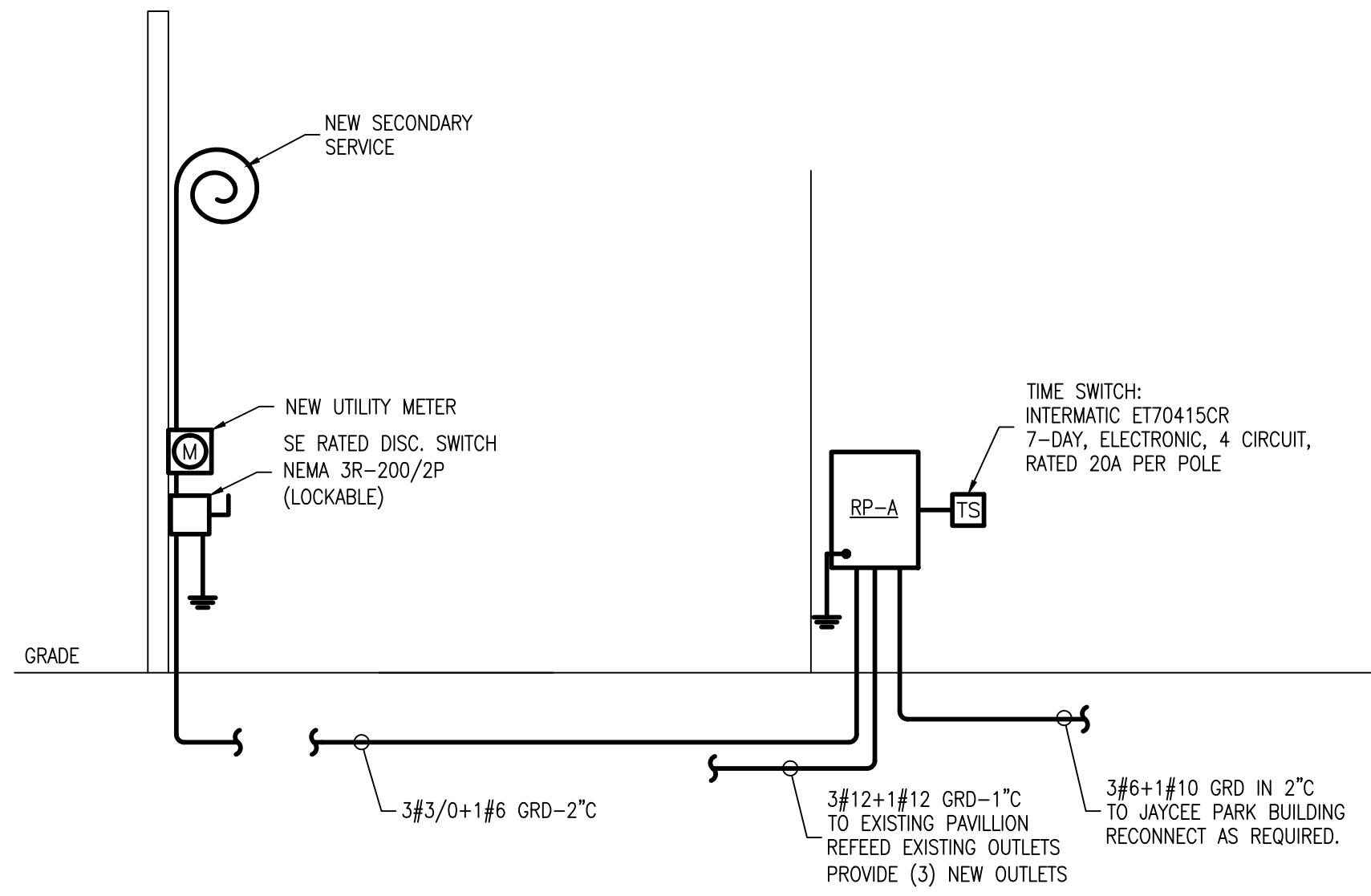
NOTE TO THE BUILDING OFFICIAL:
THESE DOCUMENTS ARE SUBMITTED ONLY FOR THE PROJECT LISTED ABOVE AND SHOULD NOT BE ACCEPTED WITHOUT THE ORIGINAL SIGNATURE AND SEAL OF THE ARCHITECT.



Scale
AS NOTED
Project Number
1625
Sheet Number

A-4
1625 - Parkland Park Comfort Station

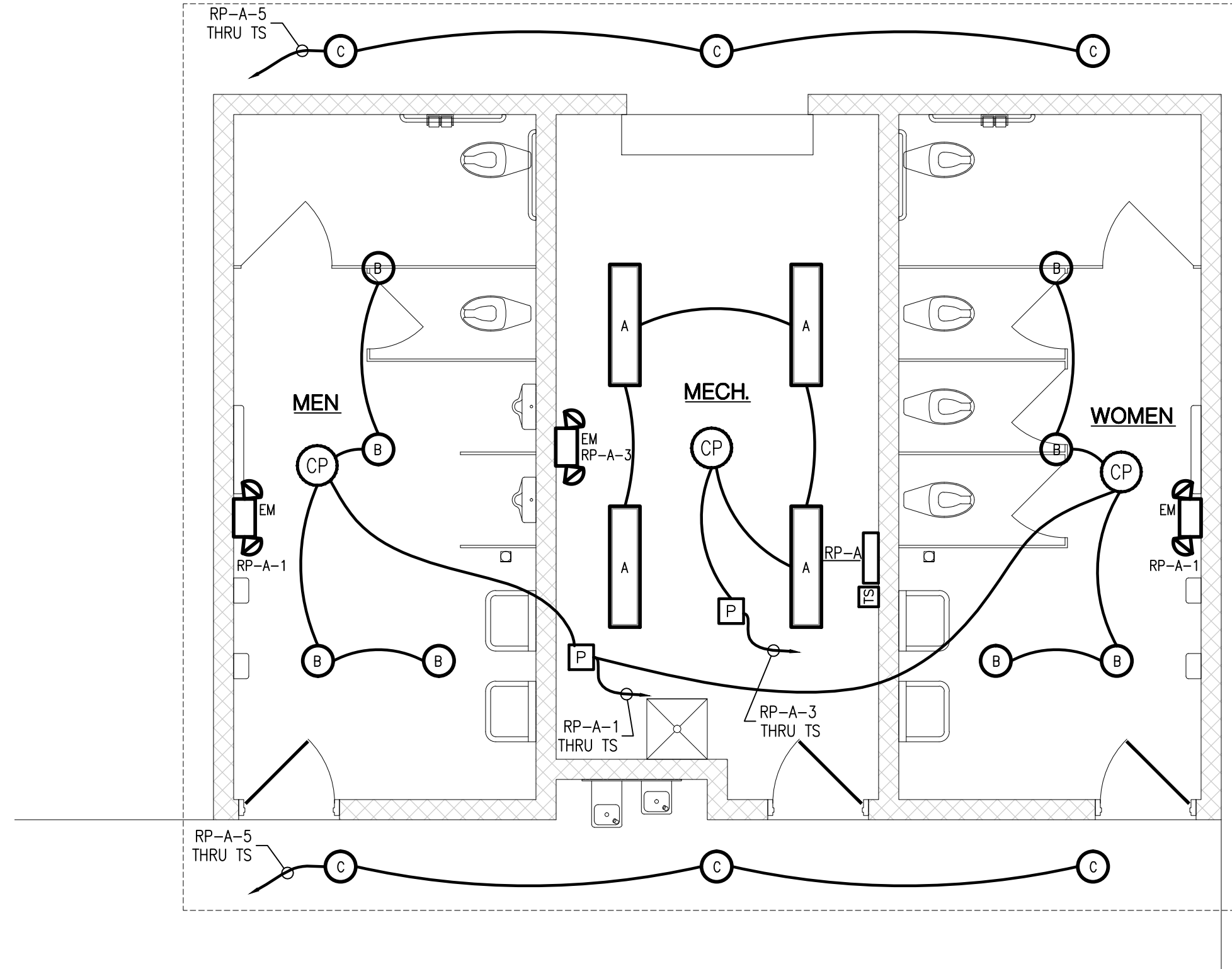
5 WALL SECTION @ O.H. SERVICE DOOR SCALE: 3/4" = 1'-0" **4 TYPICAL EXTERIOR WALL @ OVERHANG** SCALE: 3/4" = 1'-0" **3 TYPICAL EXTERIOR WALL @ DOOR** SCALE: 3/4" = 1'-0" **2 TYPICAL INTERIOR PARTITION** SCALE: 3/4" = 1'-0" **1 TYPICAL EXTERIOR WALL @ RAKE** SCALE: 1/4" = 1'-0"



ELECTRICAL RISER DIAGRAM
NOT TO SCALE (120/240V-1φ-3W)

NOTES:

- INSTALLATION OF METER SHALL BE IN ACCORDANCE WITH D.T.E. ENERGY STANDARD DETAILS.
- COORDINATE ELECTRICAL INSTALLATION WITH D.T.E. ENERGY REPRESENTATIVE AT 1-800-477-4747.
- RISER INDICATES DESIGN INTENT. COORDINATE TELEPHONE SERVICE INSTALLATION WITH TELEPHONE REPRESENTATIVE.
- ELECTRICAL TRADES CONTRACTOR SHALL COORDINATE ELECTRICAL OUTLET LOCATIONS WITH THE OWNER, ARCHITECTURAL TRADES ELEVATIONS AND/OR EQUIPMENT MANUFACTURER'S REQUIREMENTS PRIOR TO ROUGH-IN.
- THE ELECTRICAL CONTRACTOR SHALL BE RESPONSIBLE FOR ALL FIRE STOPPING ANY RATED WALL PENETRATIONS AFTER THE INSTALLATION OF ALL CONDUITS AND CABLES.
- MAKE TRANSITION FROM PVC TO RGS OUTSIDE FOOTPRINT OF BUILDING AND BEYOND THE CONCRETE WITHIN THE GRASS AREA.
- PROVIDE TRACE TAPE ABOVE ALL UNDERGROUND CONDUITS PER NEC.
- EXISTING CONDUIT TO REMAIN. NEW FEEDER BY DTE.



FLOOR PLAN- LIGHTING
SCALE: 1/4" = 1'-0"

ELECTRICAL SYMBOL LIST			
SYMBOL	DESCRIPTION	SYMBOL	DESCRIPTION
[Symbol]	LIGHT FIXTURE	[Symbol]	MOTOR
[Symbol]	DUPLEX RECEPTACLE - GROUNDING TYPE	[Symbol]	MANUAL MOTOR STARTER (P=PILOT)
[Symbol]	DUPLEX RECEPTACLE - W/GROUND FAULT PROTECTION	[Symbol]	SPECIAL PURPOSE OUTLET - SIZE AS INDICATED
[Symbol]	TELEPHONE/DATA OUTLET	+48"	INDICATES 48" ABOVE FINISHED FLOOR
[Symbol]	SINGLE POLE SWITCH	EF	EXHAUST FAN
[Symbol]	DISCONNECT SWITCH (F=FUSED)	GFI	GROUND FAULT INTERRUPTER
[Symbol]	JUNCTION BOX	WH	WATER HEATER
[Symbol]	TIME SWITCH	WP	WEATHERPROOF
[Symbol]	CM PDT 9 STANDARD RANGE 360 SENSOR, CEILING MOUNT, LOW VOLTAGE, DUAL TECHNOLOGY (PDT) (SENSOR SWITCH)		
[Symbol]	RP20 POWER PACK-RELAY CIRCUIT PROTECTION: 120/277 VAC (SENSOR SWITCH)		

LIGHTING FIXTURE SCHEDULE				
ITEM #	LAMP	DESCRIPTION	MANUFACTURER	TOTAL WATTS
"A"	LED 4000K 4938 LUMENS	SURFACE MOUNTED LOW PROFILE VANDAL RESISTANT LED WRAPAROUND LIGHT FIXTURE, 100% ACRYLIC PRISMATIC LENS, 120/277V 0-10V DIMMING DRIVER, HIGH-GLOSS BAKED WHITE POLYESTER ENAMEL FINISH.	KENALL #MLH48-48F-MB-PP-45L40K-DCC-120	45
"B"	LED 4100K 4458 LUMENS	SURFACE MOUNTED LOW PROFILE VANDAL RESISTANT LED ROUND LIGHT FIXTURE, 120/277V 0-10V DIMMING DRIVER, HIGH-GLOSS BAKED WHITE POLYESTER ENAMEL FINISH.	LUMINAIRE #ARV13-25W-4100K-120-OP-BLK-SHCAB-TX/SD	25
"C"	LED 3000K 750 LUMENS	6" RECESSED LED DOWN LIGHT, 120 VOLT, DAMP LOCATION LISTED.	DMF LIGHTING #DRD1-R6-30	13
"EM"	LED 2-4W	EMERGENCY EGRESS FIXTURE, VANDAL RESISTANT, NEMA 4X, DIE CAST ALUMINUM BACKPLATE AND THERMOPLASTIC HOUSING, COLD WEATHER OPTION, 90 MIN. BATTERY BACK UP, WHITE FINISH	LIGHTALARMS V12G1-CW4-LD7-M	10

LIGHTING NOTES:

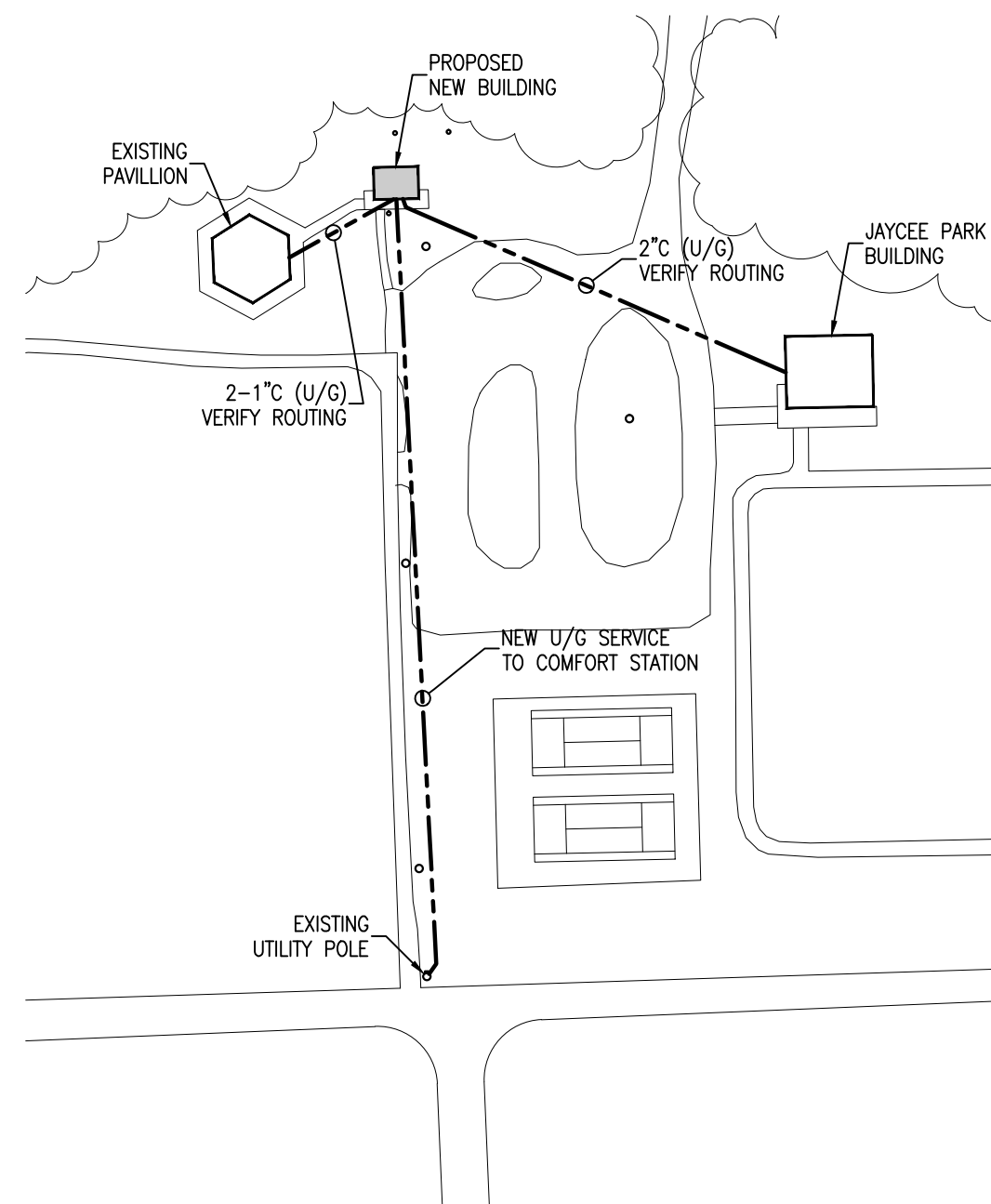
- COORDINATE LIGHTING LAYOUT WITH MECHANICAL FLOOR PLANS AND MECHANICAL DUCT WORK PRIOR TO ROUGH-IN.
- ELECTRICAL TRADES CONTRACTOR SHALL PROVIDE ALL JUNCTION BOXES, C-CHANNELS AND SUPPORTING METHOD FOR SURFACE MOUNTED LIGHT FIXTURES.
- ELECTRICAL CONTRACTOR SHALL PROVIDE POWER PACKS AND VERIFY WIRING FOR THE CEILING MOUNTED MOTION SENSOR WITH THE MANUFACTURER'S REQUIREMENTS.
- ROUTE SOFFIT WIRING CONCEALED IN BUILDING.
- EXPOSED CONDUIT IN RESTROOMS OR BUILDING EXTERIOR IS NOT ALLOWED.

POWER NOTES:

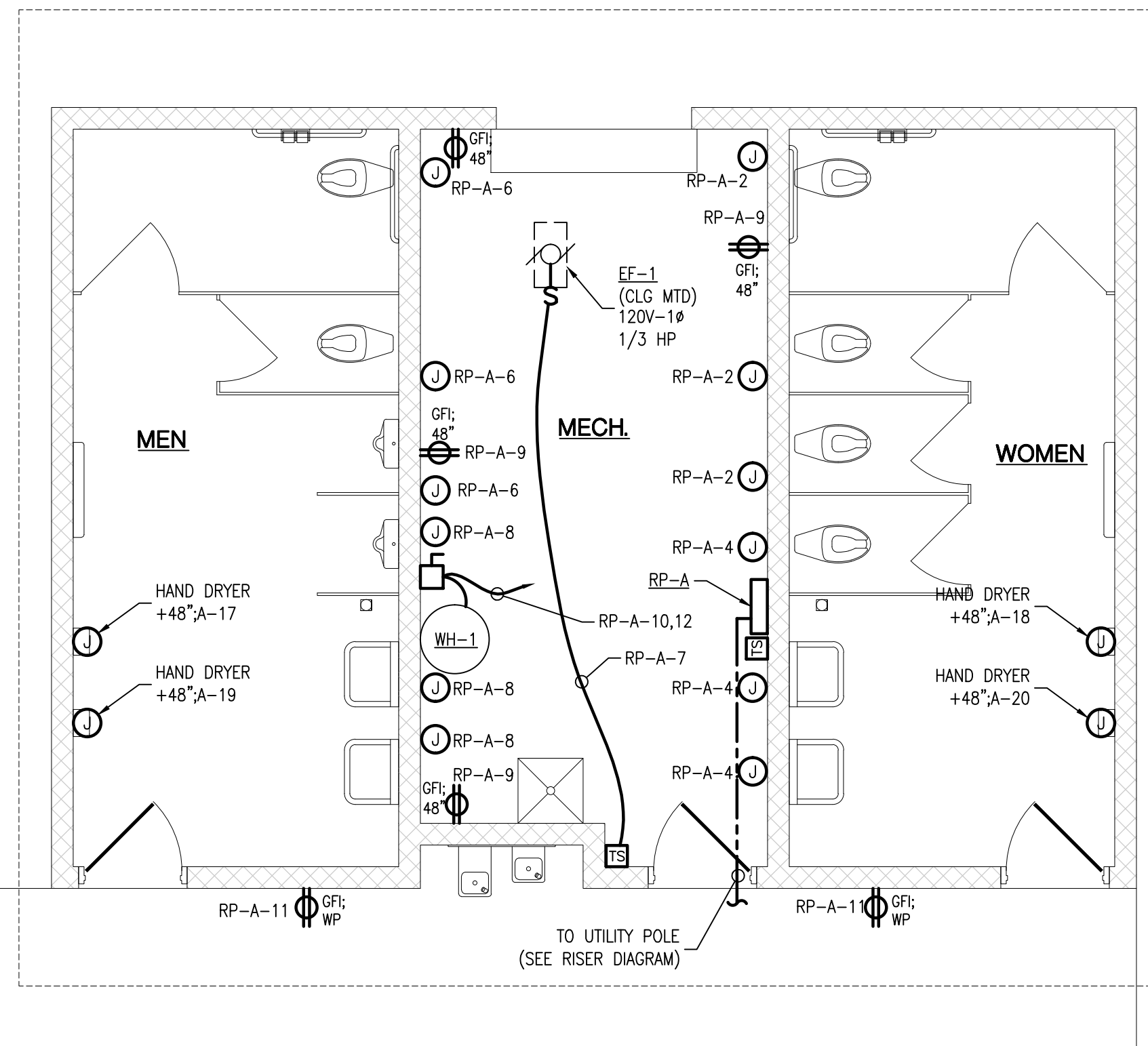
- NO MECHANICAL DUCTS, PIPING OR EQUIPMENT SHALL BE INSTALLED IN OR ABOVE ELECTRICAL EQUIPMENT SPACE PER N.E.C. COORDINATE PANEL INSTALLATION LOCATIONS WITH MECHANICAL CONTRACTOR.
- REFER TO MECHANICAL FLOOR PLANS, SCHEDULES AND DIAGRAMS FOR EXACT LOCATION OF EQUIPMENT AND WIRING REQUIREMENTS.
- ELECTRICAL TRADES CONTRACTOR SHALL COORDINATE ELECTRICAL OUTLET LOCATIONS WITH THE OWNER, ARCHITECTURAL TRADES ELEVATIONS AND/OR EQUIPMENT MANUFACTURER'S REQUIREMENTS PRIOR TO ROUGH-IN.
- OUTLETS IN AREAS THAT ARE WITHIN 6'-0" OF A SINK SHALL ALSO BE GFI TYPE.
- ON ALL EXHAUST FANS (EF'S), 120 VOLT SERVICE DISCONNECT SWITCHES SHALL BE FURNISHED AND INSTALLED BY MECHANICAL TRADES AND WIRED BY ELECTRICAL TRADES.

MOTION SENSOR NOTES:

- MOTION SENSORS AND POWER PACKS INDICATED ARE DESIGN INTENT ONLY. IT IS THE RESPONSIBILITY OF THE ELECTRICAL CONTRACTOR TO REVIEW MANUFACTURER'S INSTALLATION INSTRUCTIONS PRIOR TO ROUGH-IN. PROVIDE POWER PACKS AND ASSOCIATED WIRING FOR MULTIPLE SWITCH LEG LOCATIONS. SEE PLAN FOR EXACT SWITCH LEGS WITH-IN EACH AREA OR ROOM. ELECTRICAL CONTRACTOR SHALL PROVIDE MANUFACTURER DEVICE LAYOUT AS PART OF SHOP DRAWINGS SUBMITTALS.
- TO PREVENT FALSE ACTIVATION, CEILING MOUNT SENSORS SHALL BE MOUNTED AWAY FROM THE PATH OF STRONG AIR TURBULENCE A MINIMUM OF FOUR FEET FOR STANDARD SENSITIVITY AND SIX FEET FOR MAXIMUM SENSITIVITY. FOR TYPICAL PLACEMENT, REFER TO LOCATION DIAGRAMS.
- CONTRACTOR SHALL FOLLOW MANUFACTURER'S RECOMMENDED OF PLACEMENT, COVERAGE, FREQUENCY AND VERIFY CIRCUITS WITH RESPECT TO POWER PACKS ETC., NEEDED IN THE FIELD PER MANUFACTURER OF CHOICE. LOCATE AND AIM SENSORS IN THE CORRECT LOCATION REQUIRED FOR COMPLETE AND PROPER VOLUMETRIC COVERAGE WITHIN THE RANGE OF COVERAGE(S) OF CONTROLLED AREAS PER THE MANUFACTURER'S RECOMMENDATIONS. ROOMS SHALL HAVE ONE HUNDRED (100%) PERCENT COVERAGE TO COMPLETELY COVER THE CONTROLLED AREA TO ACCOMMODATE ALL OCCUPANCY HABITS OF SINGLE OR MULTIPLE OCCUPANTS AT ANY LOCATION WITHIN THE ROOM(S). THE CONTRACTOR SHALL PROVIDE ADDITIONAL SENSORS IF REQUIRED TO PROPERLY AND COMPLETELY COVER THE RESPECTIVE ROOM.
- CONTRACTOR IS RESPONSIBLE FOR FIELD VERIFICATION OF THE NUMBER OF POWER PACKS/ROOM CONTROLLERS NEEDED. MAXIMUM # OF SENSOR PER POWER PACK/ROOM CONTROLLER, SLAVES, NETWORK BRIDGES, GATEWAYS, ETC. DEPENDENT ON SENSOR TYPE. SEE PRODUCT INFORMATION. MULTIPLE CIRCUITS MAY BE CONTROLLED BY ONE SENSOR BY USING ADDITIONAL POWER PACKS.
- ELECTRICAL CONTRACTOR SHALL FIELD ADJUST EACH AREA'S MOTION SENSOR'S TIME DELAY FROM 5 MINUTES TO 30 MINUTES PER OWNER'S DIRECTION. PRIOR TO INSTALLATION OF MOTION SENSORS, ELECTRICAL CONTRACTOR SHALL MEET WITH OWNER TO DETERMINE EACH AREA'S TIME DELAY SETTINGS.
- SENSORS SHALL BE SET, PROGRAMMED AS AUTOMATIC "ON", AUTOMATIC "OFF" IN ALL AREAS.



SITE PLAN - ELECTRICAL
SCALE: 1" = 100'-0"



FLOOR PLAN- POWER
SCALE: 1/4" = 1'-0"

PANELBOARD SCHEDULE		RP-A	
CKT	LOAD	CB	VA
TS 1	Lighting - B (8), EM (2)	20	220 A
TS 3	Lighting - A (4), EM (1)	20	210 A
TS 5	Exterior Lighting - C (6)	20	100 A
7	EF-1	20	864 A
9	Rec (3)	20	600 A
11	Rec (2)	20	400 A
13	Pavillion Rec Circuit-EXISTING	20	1600 A
15	Pavillion Rec Circuit-NEW	20	1600 A
17	Hand Dryer-MENS	20	1500 A
19	Hand Dryer-MENS	20	1500 A
21	Time Switch	20	500 A
23	Spare	20	
25	Spare	20	
27	Spare	20	
29	Spare	20	

Panel Information	
Volts:	240/120
Mounting:	Flush
A.I.C. (RMS Symmetrical):	10,000 A
Phase:	1
Wire:	3
Hertz:	60

Symbols	
#	PROVIDE LOCK ON ATTACHMENT
*	PROVIDE SWD RATED BREAKER
@	PROVIDE HACR RATED BREAKER
+	PROVIDE ARC-FAULT TYPE BREAKER
!	INDICATES CONTINUOUS LOAD

PHASE A CONNECTED LOAD:	15,370 VA
PHASE B CONNECTED LOAD:	15,424 VA
TOTAL CONNECTED LOAD:	30,794 VA
TOTAL CONNECTED AMPS:	128.3 AMP
Total Continuous Load:	530 VA
Total Non-Continuous Load:	30,264 VA

811
Know what's below.
Call before you dig.

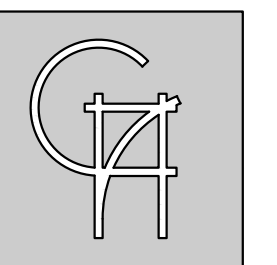
UTILITY INFORMATION, AS SHOWN, INDICATES APPROXIMATE LOCATIONS AND TYPES OF FACILITIES ONLY. AS DISCLOSED TO THIS FIRM BY THE VARIOUS UTILITY COMPANY'S RECORDS. NO GUARANTEE IS GIVEN OR IMPLIED AS TO THE COMPLETENESS OR ACCURACY THEREOF.

PRIOR TO CONSTRUCTION, ALL LOCATION AND DEPTHS OF EXISTING OVERHEAD AND UNDER- GROUND UTILITIES IN CONFLICT WITH THE CONSTRUCTION OF PROPOSED IMPROVEMENTS SHALL BE VERIFIED IN THE FIELD.

DURING CONSTRUCTION, CONTRACTOR SHALL USE EXTREME CAUTION WHEN OPERATING NEAR OVERHEAD AND/OR BURIED UTILITIES.

EAM Engineers, Inc.
Electrical and Mechanical Consulting Engineers
400 S. Old Woodward, Suite 100, Birmingham, MI 48009
Phone 248-528-6710 Fax 248-528-1642
www.eam-engineers.com eam@eam-engineers.com

Job No.: 250-17013



George J. Hartman Architects, P.C.

6905 Telegraph Road
Suite 101
Bloomfield Hills, MI 48301

248-258-5811 ph.
hartmanarchitects@ameritech.net

Project:

Parkland Park Comfort Station

2500 Parkland St.
Dearborn Heights,
Michigan 48127

Released For:

- March 3, 2017 Owner Review
- March 9, 2017 Review
- March 13, 2017 Bidding/Construction

-
-
-
-
-
-
-
-

© Copyright: 2017
THESE DRAWINGS, DOCUMENTS, DESIGN DETAILS AND ATTACHMENTS ARE THE SOLE PROPERTY OF GEORGE J. HARTMAN ARCHITECTS P.C. AND ARE NOT TO BE REPRODUCED IN PART OR IN WHOLE WITHOUT EXPRESS WRITTEN CONSENT OF GEORGE J. HARTMAN ARCHITECTS P.C. THESE DRAWINGS ARE PROTECTED BY THE FEDERAL COPYRIGHT ACT.

NOTE TO THE BUILDING OFFICIAL
THESE DOCUMENTS ARE SUBMITTED ONLY FOR THE PROJECT LISTED ABOVE AND SHOULD NOT BE ACCEPTED WITHOUT THE ORIGINAL SIGNATURE AND SEAL OF THE ARCHITECT.

Scale
AS NOTED

Project Number
1625

Sheet Number
E-1
1625 - Parkland Park Comfort Station-Electrical